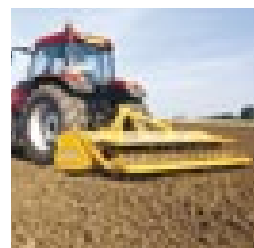
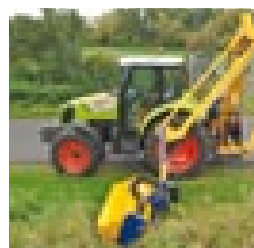
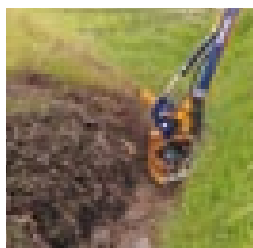


**BOMFORD**



***Setting the Standard  
Since 1904***





***Setting the Standard Since 1904***



# Contents

|                              |       |                                |       |
|------------------------------|-------|--------------------------------|-------|
| Innovations                  | 2     | <b>Flail Mowers</b>            |       |
|                              |       | CTVM                           | 25    |
| <b>Arm Mowers</b>            |       | Bandit                         | 26    |
| Microklippa                  | 3     | TurboMower Elite / Euro / Open | 27    |
| Robin                        | 4     | Raptor                         | 28    |
| Raven                        | 5     | Turbo VM                       | 29    |
| Osprey                       | 6     |                                |       |
| Kestrel E Evo                | 7     | <b>Toppers</b>                 |       |
| Kestrel S Evo                | 8     | Rotary Slasher                 | 30    |
| Hawk Evo                     | 9     | Twin-Blade                     | 31    |
| Hawk Evo Forward             | 10    | Tri-Blade                      | 32    |
| Falcon Evo                   | 11    | Tri-Wing                       | 33    |
| Falcon Evo Forward           | 12    |                                |       |
| Falcon Evo Forward VFA       | 13    | <b>Trailed Machines</b>        |       |
| B49FM 54FM 58TFM             | 14    | Roller Mower                   | 34    |
| Buzzard                      | 15    | Pro-Sweep                      | 35    |
| Eagle                        | 16-17 | Buccaneer                      | 36-37 |
| Heron                        | 18    | Buccaneer Excavator            | 38    |
|                              |       | Dyna-Drive                     | 39    |
| <b>Fittings and Controls</b> |       |                                |       |
| Piston Power                 | 19    | <b>Bedding and Feeding</b>     |       |
| Heads                        | 20    | Sila-bed                       | 40-41 |
| Attachments                  | 21    |                                |       |
| Flail options                | 22    |                                |       |
| Tractor fittings             | 23    |                                |       |
| Controls                     | 24    |                                |       |

The text images and information in this publication is provided without warranty of any kind, either express or implied, including, but not limited to, implied warranties of quality, fitness for particular purposes or non-infringement of any third party rights, purely as guidance and a convenience to Bomford Turner Limited's customers, distributors and dealers.

Inaccuracies, errors, or omissions may be contained herein but Bomford Turner Limited assumes no responsibility therefore. Information herein is liable to be changed at any time.

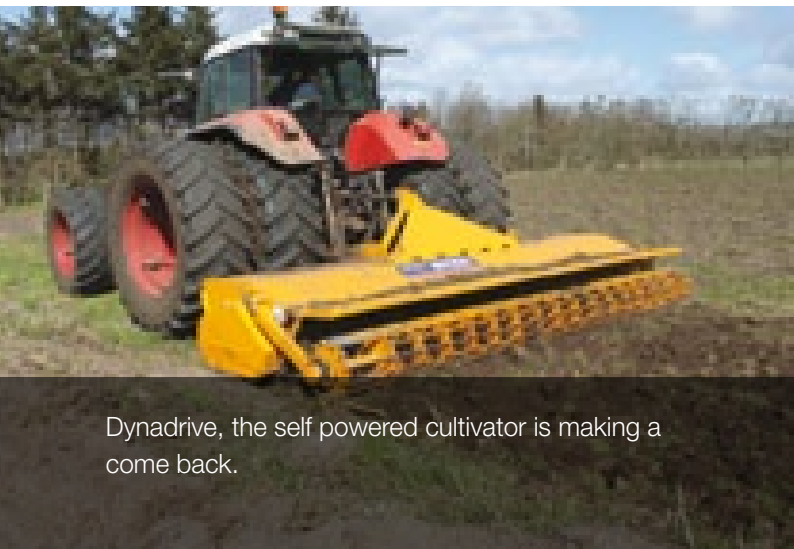
Bomford, home of Innovation



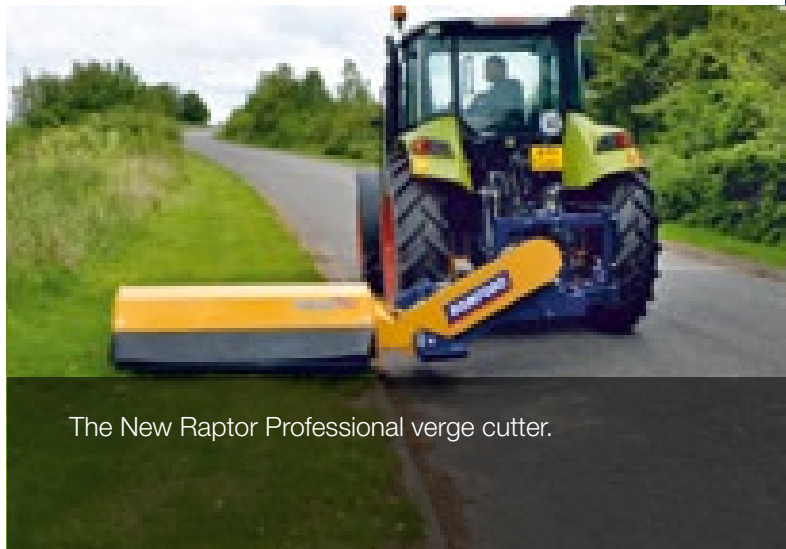
The New Eagle twin sided reach arm mower. Designed from head to toe for the environment and drainage markets.



The New Falcon Evo VFA offers variable forward arm versatility with a total traverse of over 2 metres.



Dynadrive, the self powered cultivator is making a come back.



The New Raptor Professional verge cutter.

# MicroKlippa

The MicroKlippa is very popular with estate managers and horticulturalists who admire the MicroKlippa's fine cutting capabilities and the versatility of right or left hand cutting.

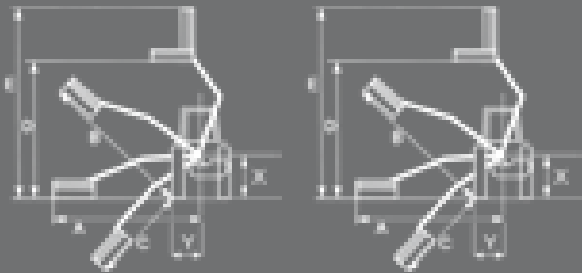
- Features:**
- 3.2m and 3.5m reach
  - Left or right hand cutting
  - Cable or Electronic Proportional Control (EPC)
  - Front mount option
  - 16-22 litres per minute

| ● Standard ● Optional ● Not Available | MicroKlippa 3.2m | MicroKlippa 3.5m |
|---------------------------------------|------------------|------------------|
| <b>Tractor requirements</b>           |                  |                  |
| Minimum horse power                   | 15 hp            | 15 hp            |
| Minimum weight                        | 550 kg           | 550 kg           |
| <b>Base unit mounting options</b>     |                  |                  |
| Front mount                           | ●                | ●                |
| Mid-mount                             | ●                | ●                |
| Rear mount                            | ●                | ●                |
| Three point linkage                   | ●                | ●                |
| Axle bracket                          | ●                | ●                |
| <b>Overall machine parameters</b>     |                  |                  |
| Machine weight                        | 192 kg           | 201 kg           |
| Capacity of oil tank                  | ●                | ●                |
| <b>Controls</b>                       |                  |                  |
| Cable control (CC)                    | ●                | ●                |
| Electronic proportional control (EPC) | ●                | ●                |
| Intelligent control system (ICS)      | ●                | ●                |
| Low pressure hydraulics (LPH)         | ●                | ●                |
| Cable rotor reverse                   | ●                | ●                |
| Electronic rotor reverse              | ●                | ●                |
| <b>Arm features and main frame</b>    |                  |                  |
| Telescopic arm                        | ●                | ●                |
| Telescopic arm stroke                 | ●                | ●                |
| Power slew                            | ●                | ●                |
| Power slew angle                      | ●                | ●                |
| Gravity breakout                      | ●                | ●                |
| Hydraulic breakout                    | ●                | ●                |
| Armfloat - manual                     | ●                | ●                |
| Armfloat - electronic                 | ●                | ●                |
| Headfloat - manual                    | ●                | ●                |
| Headfloat - electronic                | ●                | ●                |
| Left hand cutting                     | ●                | ●                |
| Right hand cutting                    | ●                | ●                |
| <b>Cutting heads</b>                  |                  |                  |
| Rotary Head                           | ●                | ●                |
| 1.2m and 1.5m cutterbars              | ●                | ●                |
| Ditch cleaner                         | ●                | ●                |



Working Reach dimensions - Head used for calcs: 905mm

|   | MicroKlippa 3.2m |        | MicroKlippa 3.5m |        |
|---|------------------|--------|------------------|--------|
| A | 3.1m             | 10' 2" | 3.4m             | 11' 2" |
| B | 3.2m             | 10' 6" | 3.5m             | 11' 6" |
| C | 2.0m             | 6' 6"  | 2.3m             | 7' 7"  |
| D | 3.5m             | 11' 6" | 3.5m             | 11' 6" |
| E | 3.4m             | 11' 2" | 3.7m             | 12' 5" |
| Y | 1m               | 3' 4"  | 1m               | 3' 4"  |
| X | 1.34m            | 4' 7"  | 1.34             | 4' 7"  |



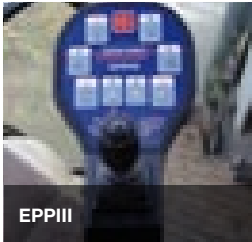
V wedge adjustable wear pads



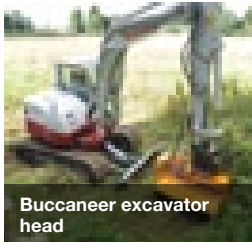
New I.C.S.



Steel pipework



EPPIII



Buccaneer excavator head



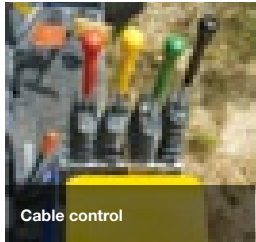
True Cut flails



Right or left cutting



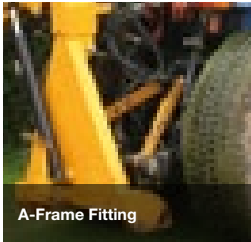
EPC



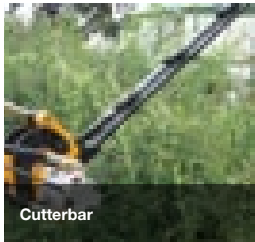
Cable control



1.2 or 1.5m Cutterbar



A-Frame Fitting



Cutterbar

# Robin

The Robin is perfect for amenity and estate use and is a firm favourite with small municipal users.

### Features:

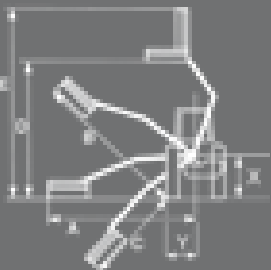
- 3.4m and 4.3m reach options
- End drive cutting head or cutter bar
- Low friction cable control
- Electronic Proportional Control (EPC)
- Front mount option

| ● Standard ● Optional ● Not Available       | Robin 3.4 | Robin 4.3 |
|---|-----------|-----------|
| Tractor requirements                        |           |           |
| Minimum horse power                         | 30-40 hp  | 40-50 hp  |
| Minimum weight                              | 1300 kgs  | 2000 kgs  |
| Base unit mounting options                  |           |           |
| Front mount                                 | ●         | ●         |
| Mid-mount                                   | ●         | ●         |
| Rear mount                                  | ●         | ●         |
| Three point linkage                         | ●         | ●         |
| Axle bracket                                | ●         | ●         |
| Overall machine parameters                  |           |           |
| Machine weight with head and oil            | 594kgs    | 670 kgs   |
| Capacity of oil tank                        | 80 Litres | 80 Litres |
| Weight of machine with oil but without head | 464 kg    | 530 kg    |
| Hydraulic Controls                          |           |           |
| Cable control (CC)                          | ●         | ●         |
| Electronic proportional control (EPC)       | ●         | ●         |
| Intelligent control system (ICS)            | ●         | ●         |
| Low pressure hydraulics (LPH)               | ●         | ●         |
| Cable rotor reverse                         | ●         | ●         |
| Electronic rotor reverse                    | ●         | ●         |
| Hydraulic system                            |           |           |
| System capability                           | 30 hp     | 30 hp     |
| Pump flow rate                              | 50 Litres | 50 Litres |
| Pump type (Gear / Piston / Helical)         | G         | G         |
| Pump arrangement (twin / in-line)           | T         | T         |
| Independent Hydraulics                      | ●         | ●         |
| Oil cooler                                  | ●         | ●         |
| Arm features and main frame                 |           |           |
| Forward arm                                 | ●         | ●         |
| Forward arm reach (Fixed / Variable)        | ●         | ●         |
| Telescopic arm                              | ●         | ●         |
| Telescopic arm stroke                       | ●         | ●         |
| Power slew                                  | ●         | ●         |
| Power slew angle                            | ●         | ●         |
| Gravity breakout                            | ●         | ●         |
| Hydraulic breakout                          | ●         | ●         |
| Armfloat - manual                           | ●         | ●         |
| Armfloat - electronic                       | ●         | ●         |
| Headfloat - manual                          | ●         | ●         |
| Headfloat - electronic                      | ●         | ●         |
| Left hand cutting                           | ●         | ●         |
| Right hand cutting                          | ●         | ●         |
| Left and right hand cutting                 | ●         | ●         |
| Arm attachments available                   |           |           |
| Variable track bracket (VTB)                | ●         | ●         |
| Cutterbar                                   | ●         | ●         |
| Bladed saw head - Pro-Saw                   | ●         | ●         |
| Ditch cleaner                               | ●         | ●         |
| Rotary head                                 | ●         | ●         |
| Accessories                                 |           |           |
| Road lights                                 | ●         | ●         |
| Debris blower                               | ●         | ●         |
| Warning arrow (Magnetic / Fixed)            | ●         | ●         |
| Cab guard kit                               | ●         | ●         |
| Cutting heads                               |           |           |
| 905mm head 102mm roller                     | ●         | ●         |
| 1000mm head 102mm roller                    | ●         | ●         |
| 1.5m Cutterbar                              | ●         | ●         |



Working Reach dimensions - Head used for calcs: 905mm

|   | Robin 3.4 |         | Robin 4.3 |        |
|---|-----------|---------|-----------|--------|
| A | 3.4m      | 11' 2"  | 4.4m      | 14' 2" |
| B | 3.0m      | 9' 10"  | 4.0m      | 13' 2" |
| C | 1.98m     | 6' 6"   | 2.98m     | 9' 10" |
| D | 3.3m      | 10' 10" | 4.3m      | 14' 2" |
| E | 4.3m      | 14' 11" | 5.3m      | 17' 5" |
| Y | 1.34m     | 4' 7"   | 1.34m     | 4' 7"  |
| X | 1m        | 3' 4"   | 1m        | 3' 4"  |



|        | HS40 | T60 | T40 | Pro Flails | Bushmaster | BB |
|--------|------|-----|-----|------------|------------|----|
| Flails | ●    | ●   | ●   | ●          | ●          | ●  |
| Flails | ●    | ●   | ●   | ●          | ●          | ●  |

# Raven

The Raven is designed for the smaller agricultural, horticultural and amenity customers. Its rugged design ensures year after year of reliability in a compact design suitable for tractors of over 40hp.

### Features:

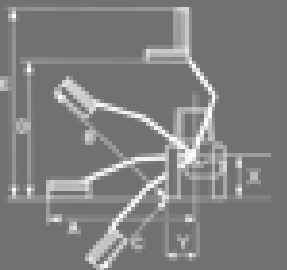
- 4.7m reach
- Choice of direct drive cutting head or cutter bar
- Low friction cable or LHP controls
- Choice of flails

| ● Standard ● Optional ● Not Available        | Raven 4.7  |
|--|------------|
| Tractor requirements                         |            |
| Minimum horse power                          | 50 hp      |
| Minimum weight                               | 2000 kgs   |
| Base unit mounting options                   |            |
| Front mount                                  | ●          |
| Mid-mount                                    | ●          |
| Rear mount                                   | ●          |
| Three point linkage                          | ●          |
| Axle bracket                                 | ●          |
| Overall machine parameters                   |            |
| Machine weight with oil and head             | 680 kgs    |
| Capacity of oil tank                         | 130 Litres |
| Weight of machine with oil but without head  | 520 kgs    |
| Hydraulic Controls                           |            |
| Cable control (CC)                           | ●          |
| Electronic proportional control (EPP)        | ●          |
| Intelligent control system (ICS)             | ●          |
| Low pressure hydraulics (LPH)                | ●          |
| Cable rotor reverse                          | ●          |
| Electronic rotor reverse                     | ●          |
| Hydraulic system                             |            |
| System capability                            | 45 hp      |
| Pump flow rate                               | 74 Lpm     |
| Pump type (Gear / Piston / Helical)          | G          |
| Pump arrangement (twin / in-line)            | T          |
| Independent Hydraulics                       | ●          |
| Oil cooler                                   | ●          |
| Arm features and main frame                  |            |
| Forward arm                                  | ●          |
| Forward arm reach (Fixed / Variable)         | ●          |
| Telescopic arm                               | ●          |
| Telescopic arm stroke                        | ●          |
| Power slew                                   | ●          |
| Power slew angle                             | ●          |
| Gravity breakout                             | ●          |
| Hydraulic breakout                           | ●          |
| Armfloat - manual                            | ●          |
| Armfloat - electronic                        | ●          |
| Headfloat - manual                           | ●          |
| Headfloat - electronic                       | ●          |
| Left hand cutting                            | ●          |
| Right hand cutting                           | ●          |
| Left and right hand cutting                  | ●          |
| Arm attachments available                    |            |
| Variable track bracket (VTB)                 | ●          |
| Cutterbar                                    | ●          |
| Pro-Saw                                      | ●          |
| Ditch cleaner                                | ●          |
| Rotary head                                  | ●          |
| Accessories                                  |            |
| Road lights                                  | ●          |
| Debris blower                                | ●          |
| Warning arrow (Magnetic / Fixed)             | ●          |
| Cab guard kit                                | ●          |
| Cutting heads                                |            |
| 905mm head 102mm roller                      | ●          |
| 1000mm head 102mm roller                     | ●          |
| 1257mm LW with 102mm roller                  | ●          |
| 1257mm LW with 150mm roller                  | ●          |
| 1107mm MW with twin back to back, 115 roller | ●          |
| 1.5m Cutterbar                               | ●          |

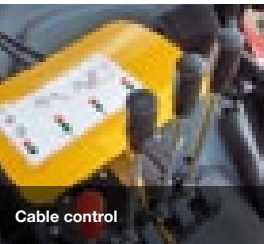


Working Reach dimensions - Head used for calcs: LW950

|   | Raven 4.7 |         |
|---|-----------|---------|
| A | 4.7m      | 15' 5"  |
| B | 4.25m     | 13' 10" |
| C | 3.69m     | 10' 5"  |
| D | 3.37m     | 11' 1"  |
| E | 4.81m     | 15' 9"  |
| Y | 1.34m     | 4' 7"   |
| X | 1m        | 3' 4"   |



|        | HS40 | T60 | T40 | Pro Flails | Bushmaster | BB |
|--------|------|-----|-----|------------|------------|----|
| Flails | ●    | ●   | ●   | ●          | ●          | ●  |
| Flails | ●    | ●   | ●   | ●          | ●          | ●  |
| Flails | ●    | ●   | ●   | ●          | ●          | ●  |
| Flails | ●    | ●   | ●   | ●          | ●          | ●  |
| Flails | ●    | ●   | ●   | ●          | ●          | ●  |



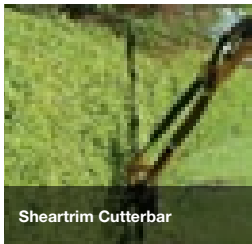
Cable control



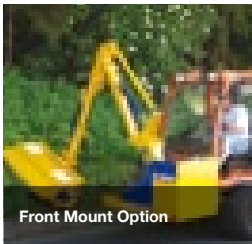
Fine Trimming



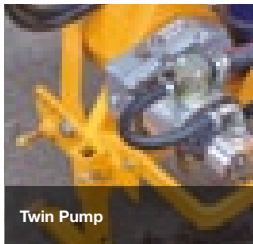
905 Head



Sheartrim Cutterbar



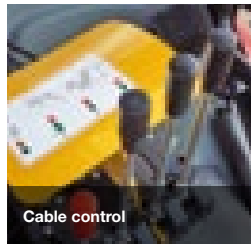
Front Mount Option



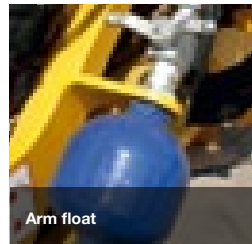
Twin Pump



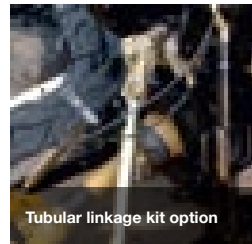
Twin pump



Cable control



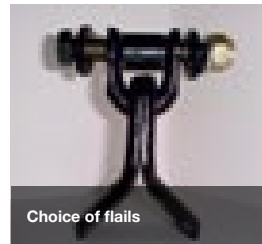
Arm float



Tubular linkage kit option



Direct drive flailhead



Choice of flails



Osprey

The Osprey was developed for the small scale and co-operative agricultural markets. This economic entry level machine would also be of interest to sports and amenity managers.

Features:

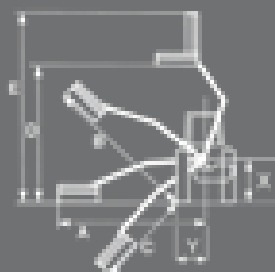
- 5.0m reach
- Choice of heads
- Low friction cable or LPH controls
- Three point linkage mounted
- 110° power slew

| ● Standard ● Optional ● Not Available        | Osprey     |
|--|------------|
| Tractor requirements                         |            |
| Minimum horse power                          | 75 hp      |
| Minimum weight                               | 2500 kgs   |
| Base unit mounting options                   |            |
| Front mount                                  | ●          |
| Mid-mount                                    | ●          |
| Rear mount                                   | ●          |
| Three point linkage                          | ●          |
| Axle bracket                                 | ●          |
| Overall machine parameters                   |            |
| Machine weight with head and oil             | 860 kgs    |
| Capacity of oil tank                         | 130 Litres |
| Weight of machine with oil but without head  | 730 kg     |
| Hydraulic Controls                           |            |
| Cable control (CC)                           | ●          |
| Electronic proportional control (EPP)        | ●          |
| Intelligent control system (ICS)             | ●          |
| Low pressure hydraulics (LPH)                | ●          |
| Cable rotor reverse                          | ●          |
| Electronic rotor reverse                     | ●          |
| Hydraulic system                             |            |
| System capability                            | 45 hp      |
| Pump flow rate                               | 74 Litres  |
| Pump type (Gear / Piston / Helical)          | G          |
| Pump arrangement (twin / in-line)            | T          |
| Independent Hydraulics                       | ●          |
| Oil cooler                                   | ●          |
| Arm features and main frame                  |            |
| Forward arm                                  | ●          |
| Forward arm reach (Fixed / Variable)         | ●          |
| Telescopic arm                               | ●          |
| Telescopic arm stroke                        | ●          |
| Power slew                                   | ●          |
| Power slew angle                             | 110°       |
| Gravity breakout                             | ●          |
| Hydraulic breakout                           | ●          |
| Armfloat - manual                            | ●          |
| Armfloat - electronic                        | ●          |
| Headfloat - manual                           | ●          |
| Headfloat - electronic                       | ●          |
| Left hand cutting                            | ●          |
| Right hand cutting                           | ●          |
| Left and right hand cutting                  | ●          |
| Arm attachments available                    |            |
| Variable track bracket (VTB)                 | ●          |
| Cutterbar                                    | ●          |
| Pro-Saw                                      | ●          |
| Ditch cleaner                                | ●          |
| Rotary head                                  | ●          |
| Accessories                                  |            |
| Road lights                                  | ●          |
| Debris blower                                | ●          |
| Warning arrow (Magnetic / Fixed)             | ●          |
| Cab guard kit                                | ●          |
| Cutting heads                                |            |
| 905mm head 102mm roller                      | ●          |
| 1000mm head 102mm roller                     | ●          |
| 1257mm LW with 102mm roller                  | ●          |
| 1257mm LW with 150mm roller                  | ●          |
| 1107mm MW with twin back to back, 115 roller | ●          |
| 1.5m Cutterbar                               | ●          |



Working Reach dimensions - Head used for calcs: 905mm

|   | Osprey |       |
|---|--------|-------|
| A | 5m     | 16'5" |
| B | 4.8m   | 15'9" |
| C | 2.8m   | 9'6"  |
| D | 4.2m   | 13'9" |
| E | 5.2m   | 17'   |
| Y | 1m     | 3'4"  |
| X | 1m     | 3'4"  |



|        | HS40 | T60 | T40 | Pro Flails | Bushmaster | BB |
|--------|------|-----|-----|------------|------------|----|
| Flails | ●    | ●   | ●   | ●          | ●          | ●  |
| Flails | ●    | ●   | ●   | ●          | ●          | ●  |
| Flails | ●    | ●   | ●   | ●          | ●          | ●  |
| Flails | ●    | ●   | ●   | ●          | ●          | ●  |

Kestrel Evo E

The Kestrel Evo "E" is perfect for the farmer who needs professional features and robust design.

Features:

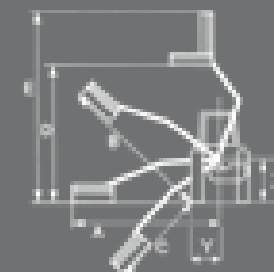
- 5m reach
- Choice of heads or 1.5m cutterbar
- Twin pump independent hydraulics
- Cat II three point linkage mounted
- Parallel standard

| ● Standard ● Optional ● Not Available        | Kestrel E 5m (16' 5") |
|--|-----------------------|
| Tractor requirements                         |                       |
| Minimum horse power                          | 50 hp                 |
| Minimum weight                               | 3000 kgs              |
| Base unit mounting options                   |                       |
| Front mount                                  | ●                     |
| Mid-mount                                    | ●                     |
| Rear mount                                   | ●                     |
| Three point linkage (CAT II)                 | ●                     |
| Axle bracket                                 | ●                     |
| Sub frame                                    | ●                     |
| Yoke   | ●                     |
| Overall machine parameters                   |                       |
| Machine weight with head and oil             | 920 kgs               |
| Capacity of oil tank                         | 160 Litres            |
| Weight of machine with oil but without head  | 760 kgs               |
| Hydraulic Controls                           |                       |
| Cable control (CC)                           | ●                     |
| Electronic proportional control (EPP)        | ●                     |
| Intelligent control system (ICS)             | ●                     |
| Low pressure hydraulics (LPH)                | ●                     |
| Cable rotor reverse                          | ●                     |
| Electronic rotor reverse                     | ●                     |
| Hydraulic system                             |                       |
| System capability                            | 45 hp                 |
| Pump flow rate                               | 74 Litres             |
| Pump type (Gear / Piston / Helical)          | G                     |
| Pump arrangement (twin / in-line)            | T                     |
| Independent Hydraulics                       | ●                     |
| Oil cooler                                   | ●                     |
| Arm features and main frame                  |                       |
| Forward arm                                  | ●                     |
| Forward arm reach (Fixed / Variable)         | ●                     |
| Telescopic arm                               | ●                     |
| Telescopic arm stroke                        | ●                     |
| Power slew                                   | ●                     |
| Power slew angle                             | ●                     |
| Gravity breakout                             | ●                     |
| Hydraulic breakout                           | ●                     |
| Armfloat - manual                            | ●                     |
| Armfloat - electronic                        | ●                     |
| Headfloat - manual                           | ●                     |
| Headfloat - electronic                       | ●                     |
| Left hand cutting                            | ●                     |
| Right hand cutting                           | ●                     |
| Left and right hand cutting                  | ●                     |
| Arm attachments available                    |                       |
| Variable track bracket (VTB)                 | ●                     |
| Cutterbar                                    | ●                     |
| Pro Saw                                      | ●                     |
| Ditch cleaner                                | ●                     |
| Rotary head                                  | ●                     |
| Accessories                                  |                       |
| Road lights                                  | ●                     |
| Debris blower                                | ●                     |
| Warning arrow (Magnetic / Fixed)             | ●                     |
| Cab guard kit                                | ●                     |
| Cutting heads                                |                       |
| 1257mm LW with 102mm roller                  | ●                     |
| 1257mm LW with 150mm roller                  | ●                     |
| 1107mm MW with twin back to back, 115 roller | ●                     |
| 1.2m Pro-Trim head with 115 roller           | ●                     |
| 1.2m Pro-Trim head with 150 roller           | ●                     |
| 1.5m Pro-Trim head with 115 roller           | ●                     |
| 1.5m Pro-Trim head with 150 roller           | ●                     |

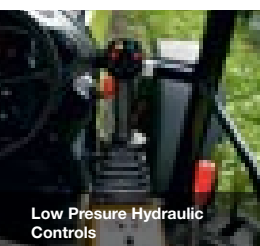


Working Reach dimensions - Head used for calcs: 1257 MW

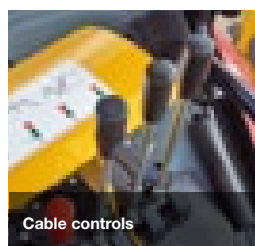
|   | Kestrel E 5P |         | Kestrel E 5 |         |
|---|--------------|---------|-------------|---------|
| A | 5.0m         | 16' 5"  | 5.0m        | 16' 5"  |
| B | 4.9m         | 16' 1"  | 4.9m        | 16' 1"  |
| C | 3.3m         | 10' 10" | 3.62m       | 11' 11" |
| D | 4.3m         | 14' 1"  | 4.0m        | 13' 2"  |
| E | 6.0m         | 19' 8"  | 5.5m        | 18' 0"  |
| Y | 1.3m         | 4' 2"   | 1.3m        | 4' 2"   |
| X | 1.0m         | 3' 4"   | 1.0m        | 3' 4"   |



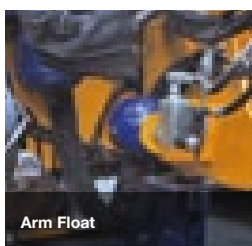
|        | HS40 | T60 | T40 | Pro Flails | Bushmaster | BB | True Cut |
|--------|------|-----|-----|------------|------------|----|----------|
| Flails | ●    | ●   | ●   | ●          | ●          | ●  | ●        |
| Flails | ●    | ●   | ●   | ●          | ●          | ●  | ●        |
| Flails | ●    | ●   | ●   | ●          | ●          | ●  | ●        |
| Flails | ●    | ●   | ●   | ●          | ●          | ●  | ●        |
| Flails | ●    | ●   | ●   | ●          | ●          | ●  | ●        |
| Flails | ●    | ●   | ●   | ●          | ●          | ●  | ●        |
| Flails | ●    | ●   | ●   | ●          | ●          | ●  | ●        |



Low Presure Hydraulic Controls



Cable controls



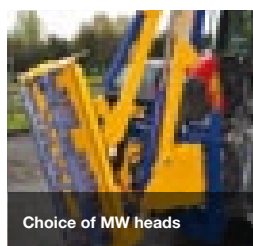
Arm Float



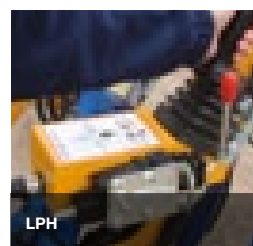
Cat II three point linkage



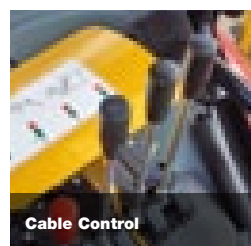
Independant twin pumps



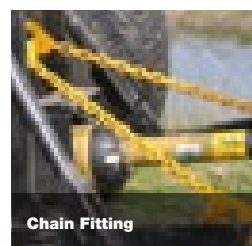
Choice of MW heads



LPH



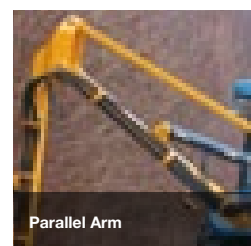
Cable Control



Chain Fitting



Independent Hydraulics



Parallel Arm



MW head

# Kestrel Evo S

The Kestrel Evo “S” has been designed to provide significant reach for farmers who need to keep weight in mind whilst retaining the versatile features of a more expensive machine.

## Features:

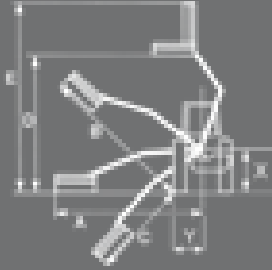
- 5m and 5.7m reach
- Parallel arm option
- Front mount option
- Choice of flails, heads and cutter bars
- Power slew
- Forward arm option

| ● Standard ● Optional ● Not Available       | Kestrel S 5P<br>5m (16' 5") | Kestrel S<br>5.7m (18' 8") |
|---|-----------------------------|----------------------------|
| <b>Tractor requirements</b>                 |                             |                            |
| Minimum horse power                         | 50 hp                       | 60 hp                      |
| Minimum weight                              | 3000 kg                     | 3500 kg                    |
| <b>Base unit mounting options</b>           |                             |                            |
| Front mount                                 | ●                           | ●                          |
| Mid-mount                                   | ●                           | ●                          |
| Rear mount                                  | ●                           | ●                          |
| Three point linkage (CAT II)                | ●                           | ●                          |
| Axle bracket                                | ●                           | ●                          |
| Sub frame                                   | ●                           | ●                          |
| Yoke  | ●                           | ●                          |
| <b>Hydraulic Controls</b>                   |                             |                            |
| Machine weight with head and oil            | 1180 kg                     | 1210 kg                    |
| Capacity of oil tank                        | 160 Litres                  | 160 Litres                 |
| Weight of machine with oil but without head | 940 kg                      | 970 kg                     |
| <b>Hydraulic Controls</b>                   |                             |                            |
| Cable control (CC)                          | ●                           | ●                          |
| Electronic proportional control (EPP)       | ●                           | ●                          |
| Intelligent control system (ICS)            | ●                           | ●                          |
| Low pressure hydraulics (LPH)               | ●                           | ●                          |
| Cable rotor reverse                         | ●                           | ●                          |
| Electronic rotor reverse                    | ●                           | ●                          |
| <b>Hydraulic system</b>                     |                             |                            |
| System capability                           | 54 hp                       | 54 hp                      |
| Pump flow rate                              | 88 Litres                   | 88 Litres                  |
| Pump type (Gear / Piston / Helical)         | G                           | G                          |
| Pump arrangement (twin / in-line)           | T                           | T                          |
| Independent Hydraulics                      | ●                           | ●                          |
| Oil cooler                                  | ●                           | ●                          |
| <b>Arm features and main frame</b>          |                             |                            |
| Forward arm                                 | ●                           | ●                          |
| Forward arm reach (Fixed / Variable)        | 600mm                       | ●                          |
| Telescopic arm                              | ●                           | ●                          |
| Telescopic arm stroke                       | ●                           | ●                          |
| Power slew                                  | ●                           | ●                          |
| Power slew angle                            | 94°                         | 94°                        |
| Gravity breakout                            | ●                           | ●                          |
| Hydraulic breakout                          | ●                           | ●                          |
| Armfloat - manual                           | ●                           | ●                          |
| Armfloat - electronic                       | ●                           | ●                          |
| Headfloat - manual                          | ●                           | ●                          |
| Headfloat - electronic                      | ●                           | ●                          |
| Left hand cutting                           | ●                           | ●                          |
| Right hand cutting                          | ●                           | ●                          |
| Left and right hand cutting                 | ●                           | ●                          |
| <b>Arm attachments available</b>            |                             |                            |
| Variable track bracket (VTB)                | ●                           | ●                          |
| Cutterbar                                   | ●                           | ●                          |
| Pro Saw                                     | ●                           | ●                          |
| Ditch cleaner                               | ●                           | ●                          |
| Rotary head                                 | ●                           | ●                          |
| <b>Accessories</b>                          |                             |                            |
| Road lights                                 | ●                           | ●                          |
| Debris blower                               | ●                           | ●                          |
| Warning arrow (Magnetic / Fixed)            | ●                           | ●                          |
| Cab guard kit                               | ●                           | ●                          |
| <b>Cutting heads</b>                        |                             |                            |
| 1.2m Pro-Trim head with 115 roller          | ●                           | ●                          |
| 1.2m Pro-Trim head with 150 roller          | ●                           | ●                          |
| 1.2m Pro-Trim ISMP with 115mm roller        | ●                           | ●                          |
| 1.2m Pro-Trim ISMP with 150mm roller        | ●                           | ●                          |
| 1.5m Pro-Trim head with 150 roller          | ●                           | ●                          |
| 1.5m Pro-Trim head with 115 roller          | ●                           | ●                          |



Working Reach dimensions - Head used for calcs: Pro-Trim 1.2

|   | Kestrel S 5P |         | Kestrel S 5 |         | Kestrel S 5.7 |        |
|---|--------------|---------|-------------|---------|---------------|--------|
| A | 4.9m         | 16'     | 5.1m        | 16' 10" | 5.7m          | 18' 8" |
| B | 4.9m         | 16'     | 5.1m        | 16' 10" | 5.9m          | 19' 4" |
| C | 3.3m         | 10' 10" | 3.3m        | 10' 10" | 3.9m          | 12' 8" |
| D | 4.0m         | 13' 3"  | 4.4m        | 14' 6"  | 5.4m          | 17' 8" |
| E | 5.6m         | 18' 5"  | 6.4m        | 21'     | 7.1m          | 23' 4" |
| Y | 1.3m         | 4' 1"   | 1.3m        | 4' 1"   | 1.3m          | 4' 1"  |
| X | 1.0m         | 3' 3"   | 1.0m        | 3' 3"   | 1.0m          | 3' 3"  |



|        | MP44 | HS40 | T60 | T40 | BB | Pro Flails | Bushmaster | True Cut |
|--------|------|------|-----|-----|----|------------|------------|----------|
| Flails | ●    | ●    | ●   | ●   | ●  | ●          | ●          | ●        |
| Flails | ●    | ●    | ●   | ●   | ●  | ●          | ●          | ●        |
| Flails | ●    | ●    | ●   | ●   | ●  | ●          | ●          | ●        |
| Flails | ●    | ●    | ●   | ●   | ●  | ●          | ●          | ●        |
| Flails | ●    | ●    | ●   | ●   | ●  | ●          | ●          | ●        |
| Flails | ●    | ●    | ●   | ●   | ●  | ●          | ●          | ●        |

# Hawk Evo

The Hawk Evo is perfect for farmers, contractors and municipal environments.

## Features:

- 5.4m, 6m or 6.5m reach
- 1.2m Pro Trim head - 1.5m option on 5.4m & 6.5m
- 105 l/min independent hydraulic system  
- 125 l/min option on 6.5m model
- 94° of slew (max non parallel systems)

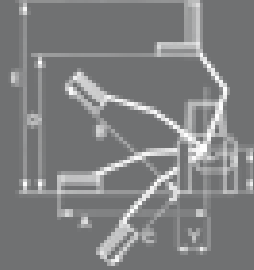
Gear pump upgrade available to 125 litre/74hp - 6.5T only

| ● Standard ● Optional ● Not Available       | Hawk 5.4<br>(17' 9") | Hawk 6<br>(19' 8") | Hawk 6.5<br>(21' 4") |
|---|----------------------|--------------------|----------------------|
| <b>Tractor requirements</b>                 |                      |                    |                      |
| Minimum horse power                         | 65 hp                | 65 hp              | 70 hp                |
| Minimum weight                              | 3000 kg              | 3250 kg            | 3500 kg              |
| <b>Base unit mounting options</b>           |                      |                    |                      |
| Front mount                                 | ●                    | ●                  | ●                    |
| Mid-mount                                   | ●                    | ●                  | ●                    |
| Rear mount                                  | ●                    | ●                  | ●                    |
| Three point linkage (CAT II)                | ●                    | ●                  | ●                    |
| Axle bracket                                | ●                    | ●                  | ●                    |
| <b>Overall machine parameters</b>           |                      |                    |                      |
| Machine weight with head and oil            | 1340 kg              | 1490 kg            | 1740 kg              |
| Capacity of oil tank                        | 180 Litres           | 180 Litres         | 250 Litres           |
| Weight of machine with oil but without head | 1100 kg              | 1250 kg            | 1500 kg              |
| <b>Hydraulic Controls</b>                   |                      |                    |                      |
| Cable control (CC)                          | ●                    | ●                  | ●                    |
| Electronic proportional control (EPP)       | ●                    | ●                  | ●                    |
| Intelligent control system (ICS)            | ●                    | ●                  | ●                    |
| Low pressure hydraulics (LPH)               | ●                    | ●                  | ●                    |
| Cable rotor reverse                         | ●                    | ●                  | ●                    |
| Electronic rotor reverse                    | ●                    | ●                  | ●                    |
| <b>Hydraulic system</b>                     |                      |                    |                      |
| System capability                           | 60 hp                | 60 hp              | 60 hp                |
| Pump flow rate                              | 104 Litres           | 104 Litres         | 104 Litres           |
| Pump type (Gear / Piston / Helical)         | G                    | G                  | G                    |
| Pump arrangement (twin / in-line)           | T                    | T                  | T                    |
| Independent Hydraulics                      | ●                    | ●                  | ●                    |
| Oil cooler                                  | ●                    | ●                  | ●                    |
| <b>Arm features and main frame</b>          |                      |                    |                      |
| Telescopic arm                              | ●                    | ●                  | ●                    |
| Telescopic arm stroke                       | ●                    | ●                  | ●                    |
| Power slew                                  | ●                    | ●                  | ●                    |
| Power slew angle                            | 94°                  | 94°                | 94°                  |
| Gravity breakout                            | ●                    | ●                  | ●                    |
| Hydraulic breakout                          | ●                    | ●                  | ●                    |
| Armfloat - manual                           | ●                    | ●                  | ●                    |
| Armfloat - electronic                       | ●                    | ●                  | ●                    |
| Headfloat - manual                          | ●                    | ●                  | ●                    |
| Headfloat - electronic                      | ●                    | ●                  | ●                    |
| Left hand cutting                           | ●                    | ●                  | ●                    |
| Right hand cutting                          | ●                    | ●                  | ●                    |
| Left and right hand cutting                 | ●                    | ●                  | ●                    |
| <b>Arm attachments available</b>            |                      |                    |                      |
| Variable track bracket (VTB)                | ●                    | ●                  | ●                    |
| Cutterbar                                   | ●                    | ●                  | ●                    |
| Pro Saw                                     | ●                    | ●                  | ●                    |
| Ditch cleaner                               | ●                    | ●                  | ●                    |
| Rotary head                                 | ●                    | ●                  | ●                    |
| <b>Accessories</b>                          |                      |                    |                      |
| Road lights                                 | ●                    | ●                  | ●                    |
| Debris blower                               | ●                    | ●                  | ●                    |
| Warning arrow (Magnetic / Fixed)            | ●                    | ●                  | ●                    |
| Cab guard kit                               | ●                    | ●                  | ●                    |
| <b>Cutting heads</b>                        |                      |                    |                      |
| 1.2m Pro-Trim with 115mm roller             | ●                    | ●                  | ●                    |
| 1.2m Pro-Trim with 150mm roller             | ●                    | ●                  | ●                    |
| 1.2m Pro-Trim ISMP with 115mm roller        | ●                    | ●                  | ●                    |
| 1.2m Pro-Trim ISMP with 150mm roller        | ●                    | ●                  | ●                    |
| 1.5m Pro-Trim with 115mm roller             | ●                    | ●                  | ●                    |
| 1.5m Pro-Trim with 150mm roller             | ●                    | ●                  | ●                    |



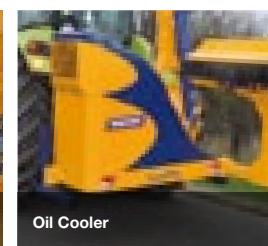
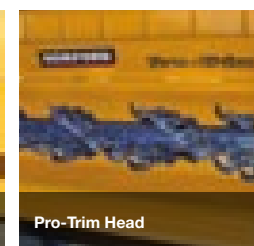
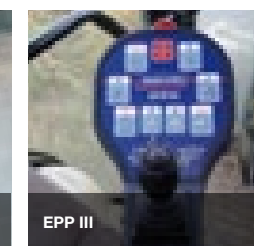
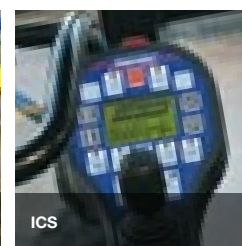
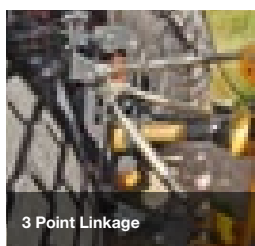
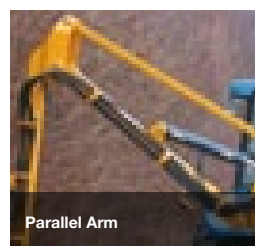
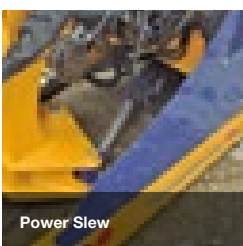
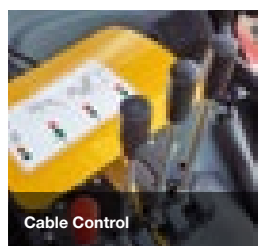
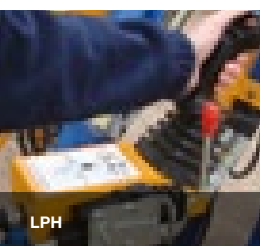
Working Reach dimensions - Head used for calcs: Pro-Trim 1.2

|   | Hawk 5.4<br>(17' 9") |         | Hawk 6<br>(19' 8") |         | Hawk 6.5<br>(21' 4") |        |
|---|----------------------|---------|--------------------|---------|----------------------|--------|
| A | 5.4m                 | 17' 9"  | 6.0m               | 19' 8"  | 6.5m                 | 21' 4" |
| B | 5.5m                 | 18'     | 6.1m               | 20'     | 6.65m                | 21' 8" |
| C | 3.7m                 | 12' 5"  | 4.3m               | 14' 1"  | 4.85m                | 15' 9" |
| D | 4.5m                 | 16' 10" | 5.6m               | 18' 6"  | 5.8m                 | 19'    |
| E | 6.16m                | 22' 3"  | 7.3m               | 23' 11" | 7.72m                | 25' 5" |
| Y | 1.35m                | 4' 5"   | 1.35m              | 4' 5"   | 1.35m                | 4' 5"  |
| X | 1m                   | 3' 4"   | 1m                 | 3' 4"   | 1m                   | 3' 4"  |



|        | MP44 | HS40 | T60 | T40 | BB | Pro Flails | Bushmaster | True Cut |
|--------|------|------|-----|-----|----|------------|------------|----------|
| Flails | ●    | ●    | ●   | ●   | ●  | ●          | ●          | ●        |
| Flails | ●    | ●    | ●   | ●   | ●  | ●          | ●          | ●        |
| Flails | ●    | ●    | ●   | ●   | ●  | ●          | ●          | ●        |
| Flails | ●    | ●    | ●   | ●   | ●  | ●          | ●          | ●        |
| Flails | ●    | ●    | ●   | ●   | ●  | ●          | ●          | ●        |
| Flails | ●    | ●    | ●   | ●   | ●  | ●          | ●          | ●        |

|        | MP44 | HS40 | T60 | T40 | BB | Pro Flails | Bushmaster | True Cut |
|--------|------|------|-----|-----|----|------------|------------|----------|
| Flails | ●    | ●    | ●   | ●   | ●  | ●          | ●          | ●        |
| Flails | ●    | ●    | ●   | ●   | ●  | ●          | ●          | ●        |
| Flails | ●    | ●    | ●   | ●   | ●  | ●          | ●          | ●        |
| Flails | ●    | ●    | ●   | ●   | ●  | ●          | ●          | ●        |
| Flails | ●    | ●    | ●   | ●   | ●  | ●          | ●          | ●        |
| Flails | ●    | ●    | ●   | ●   | ●  | ●          | ●          | ●        |



# Hawk Evo Forward

The Hawk Evo forward arm is perfect for farmers, contractors and municipal environments where the added benefits of a forward arm is required to improve visibility and minimise operator stress and fatigue.

## Features:

- 5.4m and 6m reach
- 800mm forward arm
- Oil cooled as standard on EPP/ICS
- 115mm or 150mm roller options
- Standard 3 point or optional axle bracket mounted

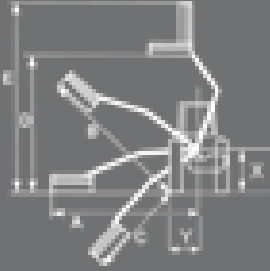
Gear pump upgrade available to 125 litre/74hp - 6.5T only Up to 92 litre/60hp fwd only

| ● Standard ● Optional ● Not Available       | Hawk Fwd 5.4<br>(17' 9") | Hawk Fwd 6<br>(19' 8") |
|---|--------------------------|------------------------|
| <b>Tractor requirements</b>                 |                          |                        |
| Minimum horse power                         | 65 hp                    | 70 hp                  |
| Minimum weight                              | 3500 kg                  | 4000 kg                |
| <b>Base unit mounting options</b>           |                          |                        |
| Front mount                                 | ●                        | ●                      |
| Mid-mount                                   | ●                        | ●                      |
| Rear mount                                  | ●                        | ●                      |
| Three point linkage (CAT II)                | ●                        | ●                      |
| Axle bracket                                | ●                        | ●                      |
| <b>Hydraulic Controls</b>                   |                          |                        |
| Machine weight with head and oil            | 1640 kg                  | 1740 kg                |
| Capacity of oil tank                        | 250 Litres               | 250 Litres             |
| Weight of machine with oil but without head | 1400 kg                  | 1500 kg                |
| <b>Hydraulic Controls</b>                   |                          |                        |
| Cable control (CC)                          | ●                        | ●                      |
| Electronic proportional control (EPP)       | ●                        | ●                      |
| Intelligent control system (ICS)            | ●                        | ●                      |
| Low pressure hydraulics (LPH)               | ●                        | ●                      |
| Cable rotor reverse                         | ●                        | ●                      |
| Electronic rotor reverse                    | ●                        | ●                      |
| <b>Hydraulic system</b>                     |                          |                        |
| System capability                           | 60 hp                    | 60 hp                  |
| Pump flow rate                              | 104 Litres               | 104 Litres             |
| Pump type (Gear / Piston / Helical)         | G                        | G                      |
| Pump arrangement (twin / in-line)           | T                        | T                      |
| Independent Hydraulics                      | ●                        | ●                      |
| Oil cooler                                  | ●                        | ●                      |
| <b>Arm features and main frame</b>          |                          |                        |
| Forward arm                                 | ●                        | ●                      |
| Forward arm reach                           | 800 mm                   | 800 mm                 |
| Power slew                                  | ●                        | ●                      |
| Power slew angle                            | 94°                      | 94°                    |
| Gravity breakout                            | ●                        | ●                      |
| Hydraulic breakout                          | ●                        | ●                      |
| Armfloat - manual                           | ●                        | ●                      |
| Armfloat - electronic                       | ●                        | ●                      |
| Headfloat - manual                          | ●                        | ●                      |
| Headfloat - electronic                      | ●                        | ●                      |
| Left hand cutting                           | ●                        | ●                      |
| Right hand cutting                          | ●                        | ●                      |
| Left and right hand cutting                 | ●                        | ●                      |
| <b>Arm attachments available</b>            |                          |                        |
| Variable track bracket (VTB)                | ●                        | ●                      |
| Cutterbar                                   | ●                        | ●                      |
| Pro Saw                                     | ●                        | ●                      |
| Ditch cleaner                               | ●                        | ●                      |
| Rotary head                                 | ●                        | ●                      |
| <b>Accessories</b>                          |                          |                        |
| Road lights                                 | ●                        | ●                      |
| Debris blower                               | ●                        | ●                      |
| Warning arrow (Magnetic / Fixed)            | ●                        | ●                      |
| Cab guard kit                               | ●                        | ●                      |
| <b>Cutting heads</b>                        |                          |                        |
| 1.2m Pro-Trim with 115mm roller             | ●                        | ●                      |
| 1.2m Pro-Trim with 150mm roller             | ●                        | ●                      |
| 1.2m Pro-Trim ISMP with 115mm roller        | ●                        | ●                      |
| 1.2m Pro-Trim ISMP with 150mm roller        | ●                        | ●                      |
| 1.5m Pro-Trim with 115mm roller             | ●                        | ●                      |
| 1.5m Pro-Trim with 150mm roller             | ●                        | ●                      |



Working Reach dimensions - Head used for calcs: Pro-Trim 1.2

|   | Hawk Fwd 5.4<br>(17' 9") |         | Hawk Fwd 6<br>(19' 8") |         |
|---|--------------------------|---------|------------------------|---------|
| A | 5.4m                     | 17' 9"  | 6.0m                   | 19' 8"  |
| B | 5.5m                     | 18'     | 6.1m                   | 20'     |
| C | 3.7m                     | 12' 5"  | 4.3m                   | 14' 1"  |
| D | 4.5m                     | 16' 10" | 5.6m                   | 18' 6"  |
| E | 6.16m                    | 22' 3"  | 7.3m                   | 23' 11" |
| Y | 1.35m                    | 4' 5"   | 1.35m                  | 4' 5"   |
| X | 1m                       | 3' 4"   | 1m                     | 3' 4"   |



|        | MP44 | HS40 | T60 | T40 | BB | Pro Flails | Bushmaster | True Cut |
|--------|------|------|-----|-----|----|------------|------------|----------|
| Flails | ●    | ●    | ●   | ●   | ●  | ●          | ●          | ●        |
| Flails | ●    | ●    | ●   | ●   | ●  | ●          | ●          | ●        |
| Flails | ●    | ●    | ●   | ●   | ●  | ●          | ●          | ●        |
| Flails | ●    | ●    | ●   | ●   | ●  | ●          | ●          | ●        |
| Flails | ●    | ●    | ●   | ●   | ●  | ●          | ●          | ●        |
| Flails | ●    | ●    | ●   | ●   | ●  | ●          | ●          | ●        |

# Falcon Evo

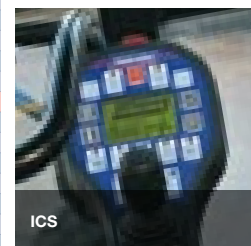
The Falcon Evo range has been specifically designed for the large scale contractor.

## Features:

- 5.5m, 6.0m or 6.5m reach
- Heavy Duty Linkage
- 125 l/min independent system
- 1.2m or 1.5m cutting head
- Parallel option

Gear Pump upgrade available to 135 litre/85hp all Falcons  
Piston Pump upgrade available see page 16

| ● Standard ● Optional ● Not Available       | Falcon 5.5<br>(18') | Falcon 6.0T<br>(19' 8") | Falcon 6.5T<br>(21' 4") | Falcon<br>Bi-way 5<br>(16' 5") |
|---|---------------------|-------------------------|-------------------------|--------------------------------|
| <b>Tractor requirements</b>                 |                     |                         |                         |                                |
| Minimum horse power                         | 70 hp               | 75 hp                   | 75 hp                   | 70 hp                          |
| Minimum weight                              | 3500 kg             | 3800 kg                 | 4250 kg                 | 3000 kg                        |
| <b>Base unit mounting options</b>           |                     |                         |                         |                                |
| Front mount                                 | ●                   | ●                       | ●                       | ●                              |
| Mid-mount                                   | ●                   | ●                       | ●                       | ●                              |
| Rear mount                                  | ●                   | ●                       | ●                       | ●                              |
| Three point linkage (CAT II)                | ●                   | ●                       | ●                       | ●                              |
| Axle bracket                                | ●                   | ●                       | ●                       | ●                              |
| <b>Overall machine parameters</b>           |                     |                         |                         |                                |
| Machine weight with head and oil            | 1790 kg             | 1890 kg                 | 2190 kg                 | 1930 kg                        |
| Capacity of oil tank                        | 250 Litres          | 250 Litres              | 250 Litres              | 250 Litres                     |
| Weight of machine with oil but without head | 1500 kg             | 1600 kg                 | 1900 kg                 | 1640 kg                        |
| <b>Hydraulic Controls</b>                   |                     |                         |                         |                                |
| Cable control (CC)                          | ●                   | ●                       | ●                       | ●                              |
| Electronic proportional control (EPP)       | ●                   | ●                       | ●                       | ●                              |
| Intelligent control system (ICS)            | ●                   | ●                       | ●                       | ●                              |
| Low pressure hydraulics (LPH)               | ●                   | ●                       | ●                       | ●                              |
| Cable rotor reverse                         | ●                   | ●                       | ●                       | ●                              |
| Electronic rotor reverse                    | ●                   | ●                       | ●                       | ●                              |
| <b>Hydraulic system</b>                     |                     |                         |                         |                                |
| System capability                           | 74hp                | 74hp                    | 74hp                    | 74 hp                          |
| Pump flow rate                              | 125 Litres          | 125 Litres              | 125 Litres              | 125 Litres                     |
| Pump type (Gear / Piston / Helical)         | G                   | G                       | G                       | G                              |
| Pump arrangement (twin / in-line)           | T                   | T                       | T                       | T                              |
| Independent Hydraulics                      | ●                   | ●                       | ●                       | ●                              |
| Oil cooler                                  | ●                   | ●                       | ●                       | ●                              |
| <b>Arm features and main frame</b>          |                     |                         |                         |                                |
| Forward arm                                 | ●                   | ●                       | ●                       | ●                              |
| Forward arm reach                           | ●                   | ●                       | ●                       | ●                              |
| Telescopic arm                              | ●                   | ●                       | ●                       | ●                              |
| Telescopic arm stroke                       | ●                   | 900mm                   | 900mm                   | ●                              |
| Power slew                                  | ●                   | ●                       | ●                       | ●                              |
| Power slew angle                            | 94°                 | 94°                     | 94°                     | 94°                            |
| Gravity breakout                            | ●                   | ●                       | ●                       | ●                              |
| Hydraulic breakout                          | ●                   | ●                       | ●                       | ●                              |
| Armfloat - manual                           | ●                   | ●                       | ●                       | ●                              |
| Armfloat - electronic                       | ●                   | ●                       | ●                       | ●                              |
| Headfloat - manual                          | ●                   | ●                       | ●                       | ●                              |
| Headfloat - electronic                      | ●                   | ●                       | ●                       | ●                              |
| Left hand cutting                           | ●                   | ●                       | ●                       | ●                              |
| Right hand cutting                          | ●                   | ●                       | ●                       | ●                              |
| Left and right hand cutting                 | ●                   | ●                       | ●                       | ●                              |
| <b>Arm attachments available</b>            |                     |                         |                         |                                |
| Variable track bracket (VTB)                | ●                   | ●                       | ●                       | ●                              |
| Cutterbar                                   | ●                   | ●                       | ●                       | ●                              |
| Pro Saw                                     | ●                   | ●                       | ●                       | ●                              |
| Ditch cleaner                               | ●                   | ●                       | ●                       | ●                              |
| Rotary head                                 | ●                   | ●                       | ●                       | ●                              |
| <b>Accessories</b>                          |                     |                         |                         |                                |
| Road lights                                 | ●                   | ●                       | ●                       | ●                              |
| Debris blower                               | ●                   | ●                       | ●                       | ●                              |
| Warning arrow (Magnetic / Fixed)            | ●                   | ●                       | ●                       | ●                              |
| Cab guard kit                               | ●                   | ●                       | ●                       | ●                              |
| <b>Cutting heads</b>                        |                     |                         |                         |                                |
| 1.2m Pro-Trim with 115mm roller             | ●                   | ●                       | ●                       | ●                              |
| 1.2m Pro-Trim with 150mm roller             | ●                   | ●                       | ●                       | ●                              |
| 1.2m Pro-Trim ISMP with 115mm roller        | ●                   | ●                       | ●                       | ●                              |
| 1.2m Pro-Trim ISMP with 150mm roller        | ●                   | ●                       | ●                       | ●                              |
| 1.5m Pro-Trim with 115mm roller             | ●                   | ●                       | ●                       | ●                              |
| 1.5m Pro-Trim with 150mm roller             | ●                   | ●                       | ●                       | ●                              |



ICS



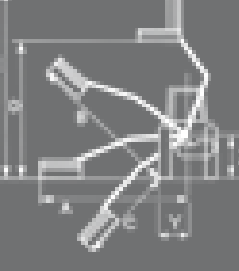
EPP III



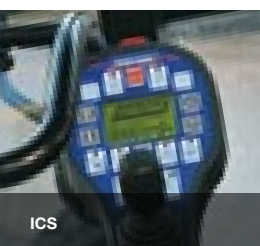
Cable Control

Working Reach dimensions - Head used for calcs: 1.2m Pro-Cut

|   | Falcon 5.5<br>(18') |        | Falcon 6.0T<br>(19' 8") |         | Falcon 6.5T<br>(21' 4") |        | Falcon<br>Bi-Way 5<br>(16' 5") |         |
|---|---------------------|--------|-------------------------|---------|-------------------------|--------|--------------------------------|---------|
| A | 5.5m                | 18'    | 6.0m                    | 19' 8"  | 6.5m                    | 21' 4" | 5.5m                           | 18'     |
| B | 5.6m                | 18' 4" | 6.15m                   | 20' 1"  | 6.65m                   | 22'    | 5.6m                           | 18' 4"  |
| C | 3.9m                | 12' 9" | 4.4m                    | 14' 5"  | 4.85m                   | 16'    | 3.9m                           | 12' 10" |
| D | 5.15m               | 16' 8" | 5.65m                   | 18' 4"  | 5.8m                    | 19'    | 5.15m                          | 16' 9"  |
| E | 6.8m                | 22' 4" | 7.3m                    | 23' 11" | 7.72m                   | 25' 5" | 6.8m                           | 22' 4"  |
| Y | 1.35m               | 4' 7"  | 1.35m                   | 4' 7"   | 1.35m                   | 4' 7"  | 1.45m                          | 4' 9"   |
| X | 1m                  | 3' 4"  | 1m                      | 3' 4"   | 1m                      | 3' 4"  | 1m                             | 3' 4"   |



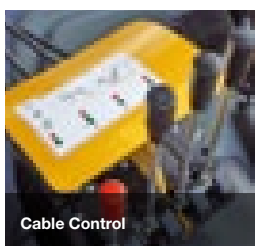
|        | MP44   | HS40 | T60 | T40 | BB | Pro Flails | Bushmaster | True Cut |
|--------|--------|------|-----|-----|----|------------|------------|----------|
| Flails | Flails | ●    | ●   | ●   | ●  | ●          | ●          | ●        |
| Flails | Flails | ●    | ●   | ●   | ●  | ●          | ●          | ●        |
| Flails | Flails | ●    | ●   | ●   | ●  | ●          | ●          | ●        |
| Flails | Flails | ●    | ●   | ●   | ●  | ●          | ●          | ●        |
| Flails | Flails | ●    | ●   | ●   | ●  | ●          | ●          | ●        |
| Flails | Flails | ●    | ●   | ●   | ●  | ●          | ●          | ●        |



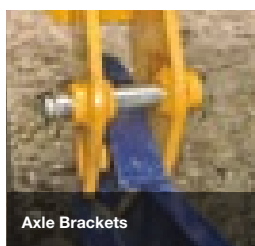
ICS



EPP III



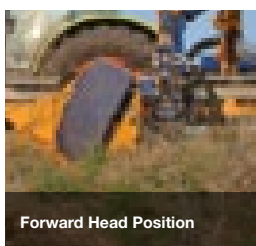
Cable Control



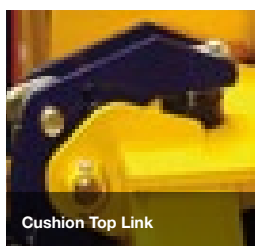
Axle Brackets



LED Road Lights



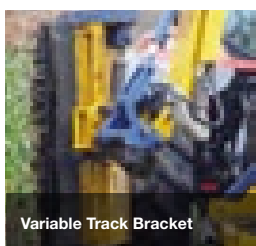
Forward Head Position



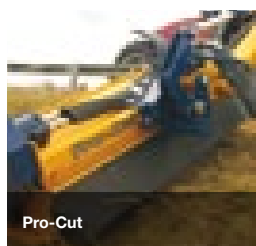
Cushion Top Link



HD Linkage



Variable Track Bracket



Pro-Cut



LED Road Lights



Axle Mounting



# Falcon Evo Forward

The Falcon Evo Forward arm is perfect for contractors and municipal environments, where the added benefits of a forward arm is required to improve visibility.

## Features:

- 5.5m or 6.5m Telescopic reach
- Over 2m traverse on variable forward arm
- Heavy duty linkage or axle bracket mounted
- 125 l/min independent system
- 1.2m or 1.5m cutting head

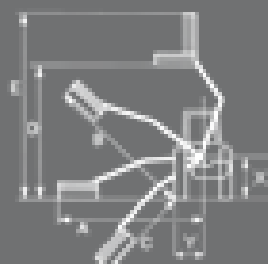
Gear Pump upgrade available to 135 litre/85hp all Falcons  
Piston Pump upgrade available see page 16

|   | Falcon Fwd 5.5<br>(17' 9") | Falcon Fwd 6<br>(19' 8") | Falcon Fwd 6.5<br>(21') |
|---|----------------------------|--------------------------|-------------------------|
| ● Standard ● Optional ● Not Available       |                            |                          |                         |
| <b>Tractor requirements</b>                 |                            |                          |                         |
| Minimum horse power                         | 70 hp                      | 80 hp                    | 80 hp                   |
| Minimum weight                              | 3800 kg                    | 4500 kg                  | 4600 kg                 |
| <b>Base unit mounting options</b>           |                            |                          |                         |
| Front mount                                 | ●                          | ●                        | ●                       |
| Mid-mount                                   | ●                          | ●                        | ●                       |
| Rear mount                                  | ●                          | ●                        | ●                       |
| Three point linkage (CAT II)                | ●                          | ●                        | ●                       |
| Axle bracket                                | ●                          | ●                        | ●                       |
| <b>Hydraulic Controls</b>                   |                            |                          |                         |
| Machine weight with head and oil            | 1990 kg                    | 2190 kg                  | 2245 kg                 |
| Capacity of oil tank                        | 250 Litres                 | 250 Litres               | 250 Litres              |
| Weight of machine with oil but without head | 1700 kg                    | 1900 kg                  | 1955 kg                 |
| <b>Hydraulic Controls</b>                   |                            |                          |                         |
| Cable control (CC)                          | ●                          | ●                        | ●                       |
| Electronic proportional control (EPP)       | ●                          | ●                        | ●                       |
| Intelligent control system (ICS)            | ●                          | ●                        | ●                       |
| Low pressure hydraulics (LPH)               | ●                          | ●                        | ●                       |
| Cable rotor reverse                         | ●                          | ●                        | ●                       |
| Electronic rotor reverse                    | ●                          | ●                        | ●                       |
| <b>Hydraulic system</b>                     |                            |                          |                         |
| System capability (Piston)                  | 74 hp                      | 74 hp                    | 74 hp                   |
| Pump flow rate                              | 125 Litres                 | 125 Litres               | 125 Litres              |
| Pump type (Gear / Piston / Helical)         | G                          | G                        | G                       |
| Pump arrangement (twin / in-line)           | T                          | T                        | T                       |
| Independent Hydraulics                      | ●                          | ●                        | ●                       |
| Oil cooler                                  | ●                          | ●                        | ●                       |
| <b>Arm features and main frame</b>          |                            |                          |                         |
| Forward arm                                 | 1200mm                     | 1200mm                   | 1200mm                  |
| Telescopic arm                              | ●                          | ●                        | ●                       |
| Telescopic arm stroke                       | ●                          | 900mm                    | 900mm                   |
| Power slew                                  | ●                          | ●                        | ●                       |
| Power slew angle                            | 94°                        | 94°                      | 94°                     |
| Gravity breakout                            | ●                          | ●                        | ●                       |
| Hydraulic breakout                          | ●                          | ●                        | ●                       |
| Armfloat - manual                           | ●                          | ●                        | ●                       |
| Armfloat - electronic                       | ●                          | ●                        | ●                       |
| Headfloat - manual                          | ●                          | ●                        | ●                       |
| Headfloat - electronic                      | ●                          | ●                        | ●                       |
| Left hand cutting                           | ●                          | ●                        | ●                       |
| Right hand cutting                          | ●                          | ●                        | ●                       |
| Left and right hand cutting                 | ●                          | ●                        | ●                       |
| <b>Arm attachments available</b>            |                            |                          |                         |
| Variable track bracket (VTB)                | ●                          | ●                        | ●                       |
| Cutterbar                                   | ●                          | ●                        | ●                       |
| Pro Saw                                     | ●                          | ●                        | ●                       |
| Ditch cleaner                               | ●                          | ●                        | ●                       |
| Rotary head                                 | ●                          | ●                        | ●                       |
| <b>Accessories</b>                          |                            |                          |                         |
| Road lights                                 | ●                          | ●                        | ●                       |
| Debris blower                               | ●                          | ●                        | ●                       |
| Warning arrow (Magnetic / Fixed)            | ●                          | ●                        | ●                       |
| Cab guard kit                               | ●                          | ●                        | ●                       |
| <b>Cutting heads</b>                        |                            |                          |                         |
| 1.2m Pro-Trim with 115mm roller             | ●                          | ●                        | ●                       |
| 1.2m Pro-Trim with 150mm roller             | ●                          | ●                        | ●                       |
| 1.2m Pro-Trim SMP with 115mm roller         | ●                          | ●                        | ●                       |
| 1.2m Pro-Trim ISMP with 150mm roller        | ●                          | ●                        | ●                       |
| 1.5m Pro-Trim with 115mm roller             | ●                          | ●                        | ●                       |
| 1.5m Pro-Trim with 150mm roller             | ●                          | ●                        | ●                       |



Working Reach dimensions - Head used for calcs: 1.2m Pro-Cut

|   | Falcon Evo<br>Fwd 5.5<br>(18') | Falcon Evo<br>Fwd 6<br>(19' 8") | Falcon Evo<br>Fwd 6.5<br>(21') |
|---|--------------------------------|---------------------------------|--------------------------------|
| A | 5.5m                           | 18'                             | 6m                             |
| B | 5.6m                           | 20' 3"                          | 6.2m                           |
| C | 3.31m                          | 14' 2"                          | 4.4m                           |
| D | 5m                             | 14' 10"                         | 5.65m                          |
| E | 6.8m                           | 20' 4"                          | 7.35m                          |
| Y | 1.45m                          | 4' 9"                           | 1.35m                          |
| X | 1m                             | 3' 4"                           | 1m                             |



|        | MP44 | HS40 | T60 | T40 | BB | Pro Flails | Bushmaster | True Cut |
|--------|------|------|-----|-----|----|------------|------------|----------|
| Flails | ●    | ●    | ●   | ●   | ●  | ●          | ●          | ●        |
| Flails | ●    | ●    | ●   | ●   | ●  | ●          | ●          | ●        |
| Flails | ●    | ●    | ●   | ●   | ●  | ●          | ●          | ●        |
| Flails | ●    | ●    | ●   | ●   | ●  | ●          | ●          | ●        |
| Flails | ●    | ●    | ●   | ●   | ●  | ●          | ●          | ●        |
| Flails | ●    | ●    | ●   | ●   | ●  | ●          | ●          | ●        |

# Falcon Evo Variable Forward Arm

The Falcon Evo Variable Forward arm is perfect for contractors and municipal environments, where the added benefits of a forward arm is required to improve visibility.

## Features:

- 6.5m reach
- Over 2m traverse on variable forward arm
- Heavy duty linkage or axle bracket mounted
- 125 l/min independent system
- 1.2m or 1.5m cutting head

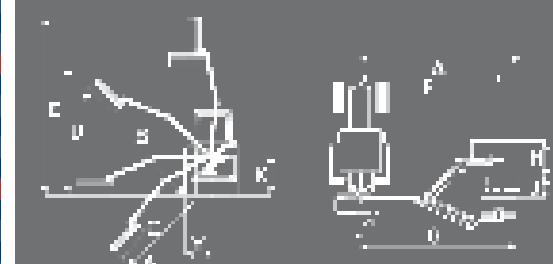
Gear Pump upgrade available to 135 litre/85hp all Falcons  
Piston Pump upgrade available see page 16

|   | Falcon Evo<br>VFA |
|---|-------------------|
| ● Standard ● Optional ● Not Available       |                   |
| <b>Tractor requirements</b>                 |                   |
| Minimum horse power                         | 80 hp             |
| Minimum weight                              | 4600 kg           |
| <b>Base unit mounting options</b>           |                   |
| Front mount                                 | ●                 |
| Mid-mount                                   | ●                 |
| Rear mount                                  | ●                 |
| Three point linkage (CAT II)                | ●                 |
| Axle bracket                                | ●                 |
| <b>Hydraulic Controls</b>                   |                   |
| Machine weight with head and oil            | 2270 kg           |
| Capacity of oil tank                        | 250 Litres        |
| Weight of machine with oil but without head | 1980 kg           |
| <b>Hydraulic Controls</b>                   |                   |
| Cable control (CC)                          | ●                 |
| Electronic proportional control (EPP)       | ●                 |
| Intelligent control system (ICS)            | ●                 |
| Low pressure hydraulics (LPH)               | ●                 |
| Cable rotor reverse                         | ●                 |
| Electronic rotor reverse                    | ●                 |
| <b>Hydraulic system</b>                     |                   |
| System capability (Piston)                  | 74 hp             |
| Pump flow rate                              | 125 Litres        |
| Pump type (Gear / Piston / Helical)         | G                 |
| Pump arrangement (twin / in-line)           | T                 |
| Independent Hydraulics                      | ●                 |
| Oil cooler                                  | ●                 |
| <b>Arm features and main frame</b>          |                   |
| Forward arm                                 | 1816mm            |
| Telescopic arm                              | ●                 |
| Telescopic arm stroke                       | ●                 |
| Power slew                                  | ●                 |
| Power slew angle                            | 94°               |
| Gravity breakout                            | ●                 |
| Hydraulic breakout                          | ●                 |
| Armfloat - manual                           | ●                 |
| Armfloat - electronic                       | ●                 |
| Headfloat - manual                          | ●                 |
| Headfloat - electronic                      | ●                 |
| Left hand cutting                           | ●                 |
| Right hand cutting                          | ●                 |
| Left and right hand cutting                 | ●                 |
| <b>Arm attachments available</b>            |                   |
| Variable track bracket (VTB)                | ●                 |
| Cutterbar                                   | ●                 |
| Pro Saw                                     | ●                 |
| Ditch cleaner                               | ●                 |
| Rotary head                                 | ●                 |
| <b>Accessories</b>                          |                   |
| Road lights                                 | ●                 |
| Debris blower                               | ●                 |
| Warning arrow (Magnetic / Fixed)            | ●                 |
| Cab guard kit                               | ●                 |
| <b>Cutting heads</b>                        |                   |
| 1.2m Pro-Trim with 115mm roller             | ●                 |
| 1.2m Pro-Trim with 150mm roller             | ●                 |
| 1.2m Pro-Trim SMP with 115mm roller         | ●                 |
| 1.2m Pro-Trim ISMP with 150mm roller        | ●                 |
| 1.5m Pro-Trim with 115mm roller             | ●                 |
| 1.5m Pro-Trim with 150mm roller             | ●                 |

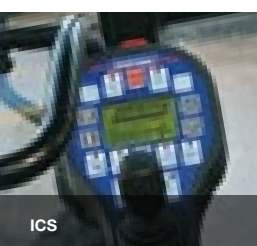


Working Reach dimensions - Head used for calcs: 1.2m Pro-Cut

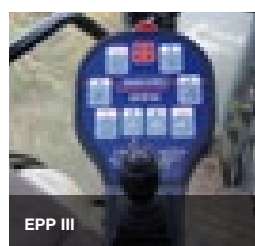
|   | Falcon Evo<br>VFA | Falcon Evo<br>VFA |
|---|-------------------|-------------------|
| A | 6.5m              | 21'               |
| B | 6.8m              | 21' 9"            |
| C | 4.6m              | 16'               |
| D | 6.0m              | 18'               |
| E | 7.6m              | 25' 6"            |
| Y | 1.6m              | 4' 9"             |
| X | 1m                | 3' 4"             |



|        | MP44 | HS40 | T60 | T40 | BB | Pro Flails | Bushmaster | True Cut |
|--------|------|------|-----|-----|----|------------|------------|----------|
| Flails | ●    | ●    | ●   | ●   | ●  | ●          | ●          | ●        |
| Flails | ●    | ●    | ●   | ●   | ●  | ●          | ●          | ●        |
| Flails | ●    | ●    | ●   | ●   | ●  | ●          | ●          | ●        |
| Flails | ●    | ●    | ●   | ●   | ●  | ●          | ●          | ●        |
| Flails | ●    | ●    | ●   | ●   | ●  | ●          | ●          | ●        |
| Flails | ●    | ●    | ●   | ●   | ●  | ●          | ●          | ●        |



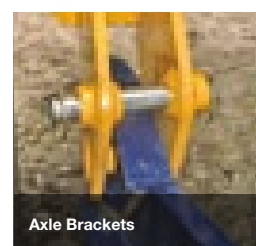
ICS



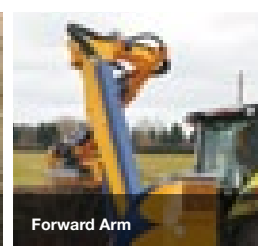
EPP III



Cable Control



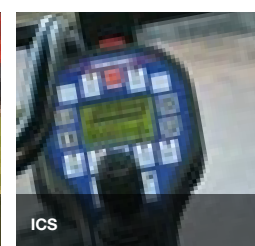
Axle Brackets



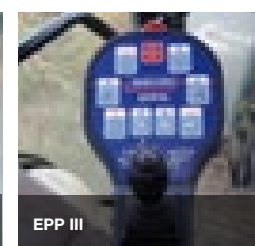
Forward Arm



Head Position



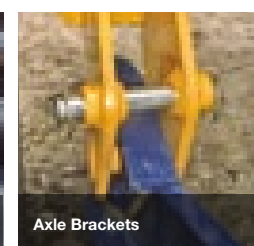
ICS



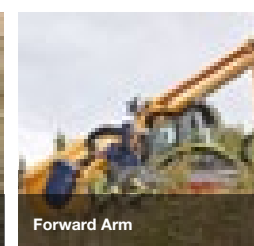
EPP III



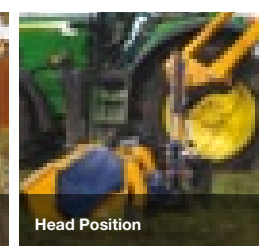
Cable Control



Axle Brackets



Forward Arm



Head Position



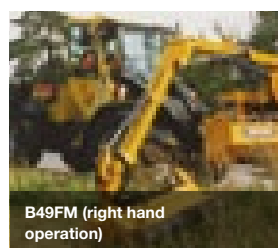
# B49FM B54FM B58TFM

The Bomford front mount range is designed with local authorities in mind where front mounted operations are required.

## Features:

- 4.9m, 5.4m or 5.8m reach options
- Front mounted
- Low profile design for good forward visibility
- 125 l/min fully independent hydraulic system
- Left and right hand side cutting
- DIN3 plate mounting option
- Tractor front linkage option

| ● Standard ● Optional ● Not Available       | B49FM 4.9m<br>(16' 1") | BF54M 5.4m<br>(17' 9") | B58TFM 5.8<br>(19') |
|---|------------------------|------------------------|---------------------|
| <b>Tractor requirements</b>                 |                        |                        |                     |
| Minimum horse power                         | 70 hp                  | 80 hp                  | 90 hp               |
| Minimum weight                              | 4000 kg                | 4250 kg                | 4500 kg             |
| <b>Base unit mounting options</b>           |                        |                        |                     |
| Front mount                                 | ●                      | ●                      | ●                   |
| Mid-mount                                   | ●                      | ●                      | ●                   |
| Rear mount                                  | ●                      | ●                      | ●                   |
| Three point linkage (CAT II)                | ●                      | ●                      | ●                   |
| Axle bracket                                | ●                      | ●                      | ●                   |
| <b>Hydraulic Controls</b>                   |                        |                        |                     |
| Machine weight with head and oil            | 1400 kg                | 1460 kg                | 1540 kg             |
| Capacity of oil tank                        | 227 Litres             | 227 Litres             | 227 Litres          |
| Weight of machine with oil but without head | 1100 kg                | 1160 kg                | 1240 kg             |
| <b>Hydraulic Controls</b>                   |                        |                        |                     |
| Cable control (CC)                          | ●                      | ●                      | ●                   |
| Electronic proportional control (EPC)       | ●                      | ●                      | ●                   |
| Intelligent control system (ICS)            | ●                      | ●                      | ●                   |
| Low pressure hydraulics (LPH)               | ●                      | ●                      | ●                   |
| Cable rotor reverse                         | ●                      | ●                      | ●                   |
| Electronic rotor reverse                    | ●                      | ●                      | ●                   |
| <b>Hydraulic system</b>                     |                        |                        |                     |
| System capability                           | 74 hp                  | 74 hp                  | 74 hp               |
| Pump flow rate                              | 125 Litres             | 125 Litres             | 125 Litres          |
| Pump type (Gear / Piston / Helical)         | G                      | G                      | G                   |
| Pump arrangement (twin / in-line)           | T                      | T                      | T                   |
| Independent Hydraulics                      | ●                      | ●                      | ●                   |
| Oil cooler                                  | ●                      | ●                      | ●                   |
| <b>Arm features and main frame</b>          |                        |                        |                     |
| Forward arm                                 | ●                      | ●                      | ●                   |
| Forward arm reach (Fixed / Variable)        | ●                      | ●                      | ●                   |
| Telescopic arm                              | ●                      | ●                      | ●                   |
| Telescopic arm stroke                       | ●                      | ●                      | 900mm               |
| Power slew                                  | ●                      | ●                      | ●                   |
| Power slew angle                            | 90°                    | 90°                    | 90°                 |
| Gravity breakout                            | ●                      | ●                      | ●                   |
| Hydraulic breakout                          | ●                      | ●                      | ●                   |
| Armfloat - electronic                       | ●                      | ●                      | ●                   |
| Headfloat - electronic                      | ●                      | ●                      | ●                   |
| Left hand cutting                           | ●                      | ●                      | ●                   |
| Right hand cutting                          | ●                      | ●                      | ●                   |
| Left and right hand cutting                 | ●                      | ●                      | ●                   |
| <b>Arm attachments available</b>            |                        |                        |                     |
| Variable track bracket (VTB)                | ●                      | ●                      | ●                   |
| Cutterbar                                   | ●                      | ●                      | ●                   |
| Pro Saw                                     | ●                      | ●                      | ●                   |
| Ditch cleaner                               | ●                      | ●                      | ●                   |
| Rotary head                                 | ●                      | ●                      | ●                   |
| <b>Accessories</b>                          |                        |                        |                     |
| Road lights                                 | ●                      | ●                      | ●                   |
| Debris blower                               | ●                      | ●                      | ●                   |
| Warning arrow (Magnetic / Fixed)            | ●                      | ●                      | ●                   |
| Cab guard kit                               | ●                      | ●                      | ●                   |
| <b>Cutting heads</b>                        |                        |                        |                     |
| 1.2m Pro-Cut with 115mm roller              | ●                      | ●                      | ●                   |
| 1.2m Pro-Cut with 150mm roller              | ●                      | ●                      | ●                   |
| 1.2m head ISMP with 115mm roller            | ●                      | ●                      | ●                   |
| 1.2m head ISMP with 150mm roller            | ●                      | ●                      | ●                   |

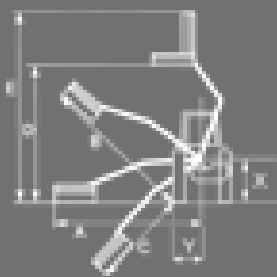


B49FM (right hand operation)



## Working Reach dimensions - Head used for calcs: 1.2m Pro-Cut

|   | B49FM 4.9m<br>(16' 1") | BF54M 5.4m<br>(17' 9") | B58TFM 5.8<br>(19') |
|---|------------------------|------------------------|---------------------|
| A | 4.9m                   | 16' 9"                 | 5.3m                |
| B | 4.9m                   | 16' 9"                 | 5.34m               |
| C | 3.4m                   | 11' 2"                 | 3.29m               |
| D | 4.2m                   | 13' 9"                 | 4.7m                |
| E | 6.1m                   | 20'                    | 6.51m               |
| X | 1.5m                   | 4' 11"                 | 1.5m                |
| Y | 1m                     | 3' 4"                  | 1m                  |



|        | MP44 | HS40 | T60 | T40 | BB | Pro Flails | Bushmaster | True Cut |
|--------|------|------|-----|-----|----|------------|------------|----------|
| Flails | ●    | ●    | ●   | ●   | ●  | ●          | ●          | ●        |
| Flails | ●    | ●    | ●   | ●   | ●  | ●          | ●          | ●        |
| Flails | ●    | ●    | ●   | ●   | ●  | ●          | ●          | ●        |
| Flails | ●    | ●    | ●   | ●   | ●  | ●          | ●          | ●        |

# Buzzard

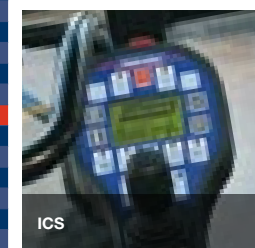
The Buzzard range has been specially designed for professional contractors who need 24/7 reliability

## Features:

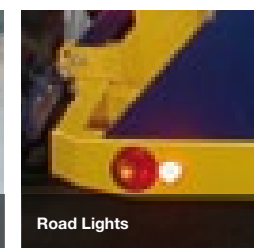
- 7.25m or 8m reach
- 1.2m or 1.5m cutting heads
- Oil cooled as standard
- ICS fully proportional controls

Piston Pump upgrade available see page 16

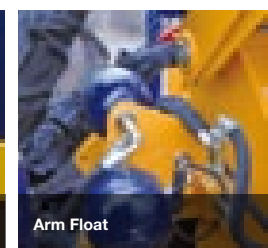
| ● Standard ● Optional ● Not Available       | Buzzard 7.25T<br>(23' 9") | Buzzard 8.0T<br>(26' 3") |
|---|---------------------------|--------------------------|
| <b>Tractor requirements</b>                 |                           |                          |
| Minimum horse power                         | 90 hp                     | 100 hp                   |
| Minimum weight                              | 4750 kg                   | 5000 kg                  |
| <b>Base unit mounting options</b>           |                           |                          |
| Front mount                                 | ●                         | ●                        |
| Mid-mount                                   | ●                         | ●                        |
| Rear mount                                  | ●                         | ●                        |
| Three point linkage (CAT II)                | ●                         | ●                        |
| Axle bracket                                | ●                         | ●                        |
| <b>Hydraulic Controls</b>                   |                           |                          |
| Machine weight with head and oil            | 2290 kg                   | 2490 kg                  |
| Capacity of oil tank                        | 250 Litres                | 250 Litres               |
| Weight of machine with oil but without head | 2000 kg                   | 2200 kg                  |
| <b>Hydraulic Controls</b>                   |                           |                          |
| Cable control (CC)                          | ●                         | ●                        |
| Electronic proportional control (EPP)       | ●                         | ●                        |
| Intelligent control system (ICS)            | ●                         | ●                        |
| Low pressure hydraulics (LPH)               | ●                         | ●                        |
| Cable rotor reverse                         | ●                         | ●                        |
| Electronic rotor reverse                    | ●                         | ●                        |
| <b>Hydraulic system</b>                     |                           |                          |
| System capability                           | 74 hp                     | 74 hp                    |
| Pump flow rate                              | 125 Litres                | 125 Litres               |
| Pump type (Gear / Piston / Helical)         | G                         | G                        |
| Pump arrangement (twin / in-line)           | T                         | T                        |
| Independent Hydraulics                      | ●                         | ●                        |
| Oil cooler                                  | ●                         | ●                        |
| <b>Arm features and main frame</b>          |                           |                          |
| Forward arm option                          | 1200mm                    | 1200mm                   |
| Telescopic arm                              | ●                         | ●                        |
| Telescopic arm stroke                       | 1300mm                    | 1450mm                   |
| Power slew                                  | ●                         | ●                        |
| Power slew angle                            | 94°                       | 94°                      |
| Gravity breakout                            | ●                         | ●                        |
| Hydraulic breakout                          | ●                         | ●                        |
| Armfloat - manual                           | ●                         | ●                        |
| Armfloat - electronic                       | ●                         | ●                        |
| Headfloat - manual                          | ●                         | ●                        |
| Headfloat - electronic                      | ●                         | ●                        |
| Left hand cutting                           | ●                         | ●                        |
| Right hand cutting                          | ●                         | ●                        |
| Left and right hand cutting                 | ●                         | ●                        |
| <b>Arm attachments available</b>            |                           |                          |
| Variable track bracket (VTB)                | ●                         | ●                        |
| Cutterbar                                   | ●                         | ●                        |
| Pro Saw                                     | ●                         | ●                        |
| Ditch cleaner                               | ●                         | ●                        |
| Rotary head                                 | ●                         | ●                        |
| <b>Accessories</b>                          |                           |                          |
| Road lights                                 | ●                         | ●                        |
| Debris blower                               | ●                         | ●                        |
| Warning arrow (Magnetic / Fixed)            | ●                         | ●                        |
| Cab guard kit                               | ●                         | ●                        |
| <b>Cutting heads</b>                        |                           |                          |
| 1.2m Pro-Cut with 115mm roller              | ●                         | ●                        |
| 1.2m Pro-Cut with 150mm roller              | ●                         | ●                        |
| 1.2m Pro-Cut ISMP with 115mm roller         | ●                         | ●                        |
| 1.2m Pro-Cut ISMP with 150mm roller         | ●                         | ●                        |
| 1.5m Pro-Cut with 115mm roller              | ●                         | ●                        |
| 1.5m Pro-Cut with 150mm roller              | ●                         | ●                        |
| 2m HD head                                  | ●                         | ●                        |



ICS



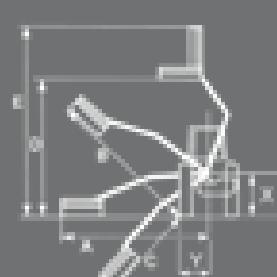
Road Lights



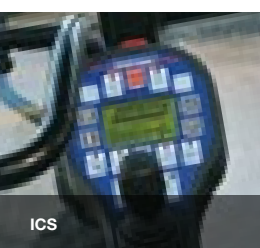
Arm Float

## Working Reach dimensions - Head used for calcs: 1.2m Pro-Cut

|   | Buzzard 7.25T<br>(23' 9") | Buzzard 8.0T<br>(26' 3") |
|---|---------------------------|--------------------------|
| A | 7.25m                     | 23' 9"                   |
| B | 7.4m                      | 24' 3"                   |
| C | 5.5m                      | 18' 4"                   |
| D | 6.8m                      | 22' 4"                   |
| E | 8.35m                     | 27' 5"                   |
| Y | 1.35m                     | 4' 7"                    |
| X | 1m                        | 3' 4"                    |



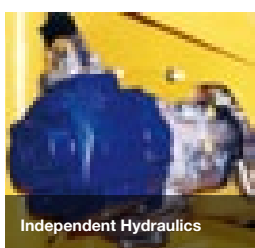
|        | MP44 | HS40 | T60 | T40 | BB | Pro Flails | Bushmaster | True Cut |
|--------|------|------|-----|-----|----|------------|------------|----------|
| Flails | ●    | ●    | ●   | ●   | ●  | ●          | ●          | ●        |
| Flails | ●    | ●    | ●   | ●   | ●  | ●          | ●          | ●        |
| Flails | ●    | ●    | ●   | ●   | ●  | ●          | ●          | ●        |
| Flails | ●    | ●    | ●   | ●   | ●  | ●          | ●          | ●        |
| Flails | ●    | ●    | ●   | ●   | ●  | ●          | ●          | ●        |
| Flails | ●    | ●    | ●   | ●   | ●  | ●          | ●          | ●        |
| Flails | ●    | ●    | ●   | ●   | ●  | ●          | ●          | ●        |
| Flails | ●    | ●    | ●   | ●   | ●  | ●          | ●          | ●        |



ICS



EPP III



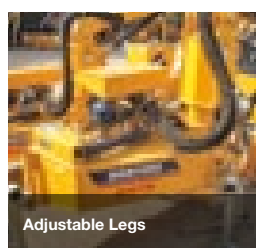
Independent Hydraulics



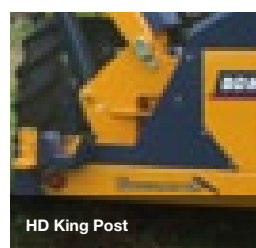
HD King Post



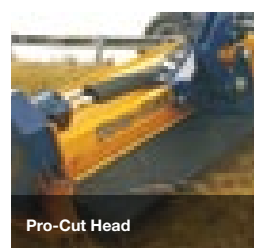
HD Arm Linkage



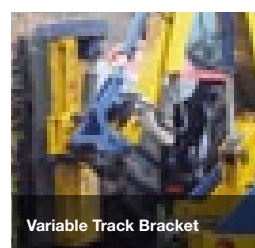
Adjustable Legs



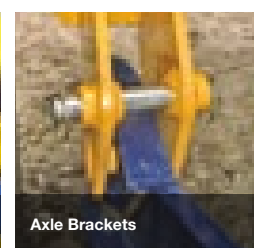
HD King Post



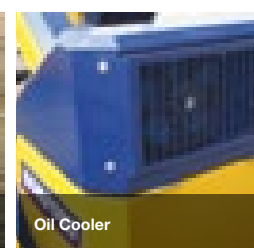
Pro-Cut Head



Variable Track Bracket



Axle Brackets



Oil Cooler



Adjustable Wearpads



The Heron is specifically designed for the drainage and environment agency operator who needs maximum reach, whilst minimising balance requirements through its mid-mounted fitting.

#### Features:

- 7.6m, 8.35m and 9.3m reach
- Mid mounted
- ICS fully proportional control
- 77hp piston pump system
- Rear mounted tank

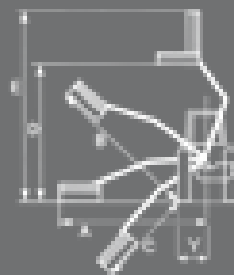
Piston Pump upgrade available see page 16

|   | Heron 7.6m<br>(24' 11") | Heron 8.3m<br>(27' 4") | Heron 9.3m<br>(30' 6") |
|---|-------------------------|------------------------|------------------------|
| ● Standard ● Optional ● Not Available       |                         |                        |                        |
| <b>Tractor requirements</b>                 |                         |                        |                        |
| Minimum horse power                         | 120 hp                  | 125 hp                 | 130 hp                 |
| Minimum weight                              | 4750 kg                 | 5000 kg                | 5500 kg                |
| <b>Base unit mounting options</b>           |                         |                        |                        |
| Front mount                                 | ●                       | ●                      | ●                      |
| Mid-mount                                   | ●                       | ●                      | ●                      |
| Rear mount                                  | ●                       | ●                      | ●                      |
| Three point linkage (CAT II)                | ●                       | ●                      | ●                      |
| Axle bracket                                | ●                       | ●                      | ●                      |
| <b>Hydraulic Controls</b>                   |                         |                        |                        |
| Machine weight with head and oil            | 3218 kg                 | 3248 g                 | 3298 kg                |
| Capacity of oil tank                        | 250 Litre               | 250 Litre              | 250 Litre              |
| Weight of machine with oil but without head | 2938 kg                 | 2968 kg                | 3018 kg                |
| <b>Hydraulic Controls</b>                   |                         |                        |                        |
| Cable control (CC)                          | ●                       | ●                      | ●                      |
| Electronic proportional control (EPP)       | ●                       | ●                      | ●                      |
| Intelligent control system (ICS)            | ●                       | ●                      | ●                      |
| Low pressure hydraulics (LPH)               | ●                       | ●                      | ●                      |
| Cable rotor reverse                         | ●                       | ●                      | ●                      |
| Electronic rotor reverse                    | ●                       | ●                      | ●                      |
| <b>Hydraulic system</b>                     |                         |                        |                        |
| System capability                           | 77 hp                   | 77 hp                  | 77 hp                  |
| Pump flow rate                              | 122 Litres              | 122 Litres             | 122 Litres             |
| Pump type (Gear / Piston / Helical)         | P                       | P                      | P                      |
| Pump arrangement (twin / in-line)           | T                       | T                      | T                      |
| Independent Hydraulics                      | ●                       | ●                      | ●                      |
| Oil cooler                                  | ●                       | ●                      | ●                      |
| <b>Arm features and main frame</b>          |                         |                        |                        |
| Forward arm                                 | ●                       | ●                      | ●                      |
| Forward arm reach (Fixed / Variable)        |                         |                        |                        |
| Telescopic arm                              | 1450mm                  | 1450mm                 | 1450mm                 |
| Telescopic arm stroke                       | 110°                    | 110°                   | 110°                   |
| Power slew                                  | 94°                     | 94°                    | 94°                    |
| Power slew angle                            | ●                       | ●                      | ●                      |
| Gravity breakout                            | ●                       | ●                      | ●                      |
| Hydraulic breakout                          | ●                       | ●                      | ●                      |
| Armfloat - electronic                       | ●                       | ●                      | ●                      |
| Headfloat - electronic                      | ●                       | ●                      | ●                      |
| Left hand cutting                           | ●                       | ●                      | ●                      |
| Right hand cutting                          | ●                       | ●                      | ●                      |
| Left and right hand cutting                 | ●                       | ●                      | ●                      |
| <b>Arm attachments available</b>            |                         |                        |                        |
| Variable track bracket (VTB)                | ●                       | ●                      | ●                      |
| Cutterbar                                   | ●                       | ●                      | ●                      |
| Pro Saw                                     | ●                       | ●                      | ●                      |
| Ditch cleaner                               | ●                       | ●                      | ●                      |
| Rotary head                                 | ●                       | ●                      | ●                      |
| <b>Accessories</b>                          |                         |                        |                        |
| Road lights                                 | ●                       | ●                      | ●                      |
| Debris blower                               | ●                       | ●                      | ●                      |
| Warning arrow (Magnetic / Fixed)            | ●                       | ●                      | ●                      |
| Cab guard kit                               | ●                       | ●                      | ●                      |
| <b>Cutting heads</b>                        |                         |                        |                        |
| 1.2m Pro-Cut with 115mm roller              | ●                       | ●                      | ●                      |
| 1.2m Pro-Cut with 150mm roller              | ●                       | ●                      | ●                      |
| 1.2m Pro-Cut ISMP with 115mm roller         | ●                       | ●                      | ●                      |
| 1.2m Pro-Cut ISMP with 150mm roller         | ●                       | ●                      | ●                      |
| 1.5m Pro-Cut with 115mm roller              | ●                       | ●                      | ●                      |
| 1.5m Pro-Cut with 150mm roller              | ●                       | ●                      | ●                      |



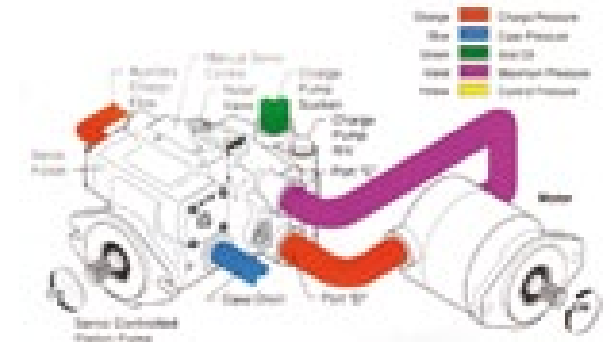
#### Working Reach dimensions - Head used for calcs: 1.2m Pro-Cut

|   | Heron 7.6m<br>(24' 11") | Heron 8.3m<br>(27' 4") | Heron 9.3m<br>(30' 6") |
|---|-------------------------|------------------------|------------------------|
| A | 7.6m 24'11"             | 8.35m 27'4"            | 9.3m 30'6"             |
| B | 7.17m 23'6"             | 7.9m 25'9"             | 8.75m 28'8"            |
| C | 5.65m 18'6"             | 6.35m 20'8"            | 7.15m 23'6"            |
| D | 5.1m 16'9"              | 5.5m 18'               | 6.25m 20'6"            |
| E | 6.75m 22'2"             | 7.15m 23'6"            | 8.45m 27'3"            |
| Y | 1m 3'4"                 | 1m 3'4"                | 1m 3'4"                |



|        | MP44 | HS40 | T60 | T40 | BB | Pro Flails | Bushmaster | True Cut |
|--------|------|------|-----|-----|----|------------|------------|----------|
| Flails | ●    | ●    | ●   | ●   | ●  | ●          | ●          | ●        |
| Flails | ●    | ●    | ●   | ●   | ●  | ●          | ●          | ●        |
| Flails | ●    | ●    | ●   | ●   | ●  | ●          | ●          | ●        |
| Flails | ●    | ●    | ●   | ●   | ●  | ●          | ●          | ●        |
| Flails | ●    | ●    | ●   | ●   | ●  | ●          | ●          | ●        |
| Flails | ●    | ●    | ●   | ●   | ●  | ●          | ●          | ●        |

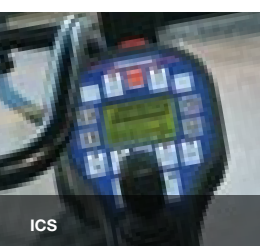
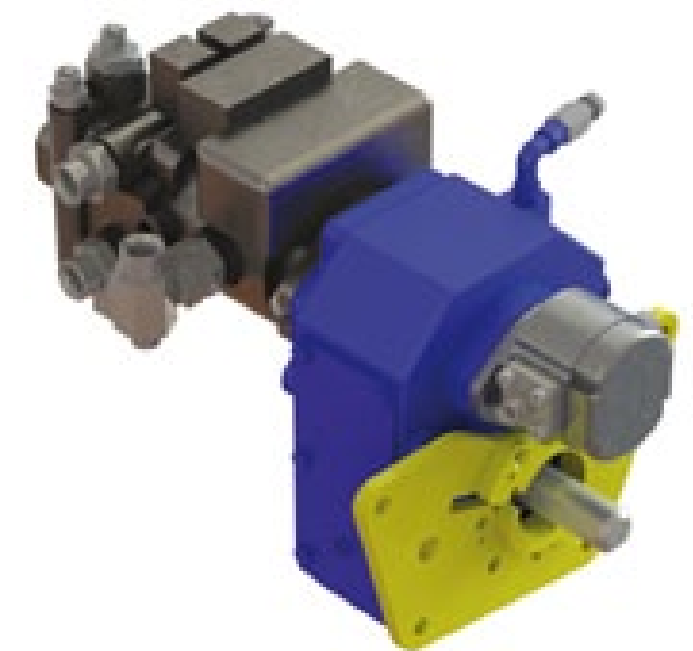
The Piston hydraulic system increases the power output of the head but more importantly the closed loop system offers higher efficiencies over longer work periods, ultimately benefiting in sustained power at lower oil temperatures, of great advantage to professional users.



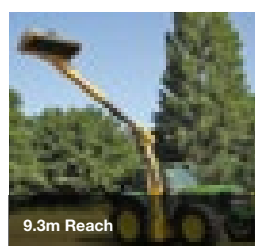
The Eaton Piston pump system, in combination with our large capacity oil coolers and generous oil reservoirs, mean lower and consistent oil temperature and ultimately longer life span of major components.

The Falcon and Buzzard range offers a Twin Piston Pump system at 1000rpm PTO speed for both flail head and ram circuits, supplying a fully load sensing supply of oil to the larger hydraulic rams of these machines and in combination with the Bomford ICS control enables fast and precise control of the arms.

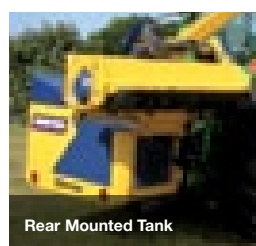
New for the Hawk Forward arm and Hawk 6.5T is a Piston system that combines high power supply to the flail head and a conventional gear supply to the ram circuit to achieve higher work rates for the Hawk. The system also runs at 540rpm PTO speed so when used in conjunction with tractors equipped with 750 economy speed, better fuel economy can be achieved.



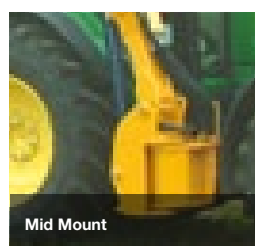
ICS



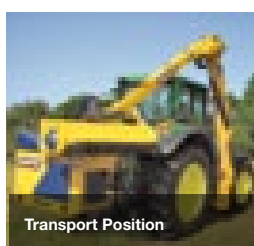
9.3m Reach



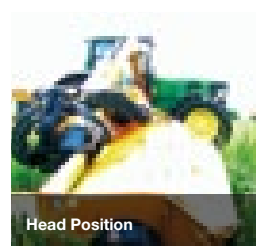
Rear Mounted Tank



Mid Mount



Transport Position



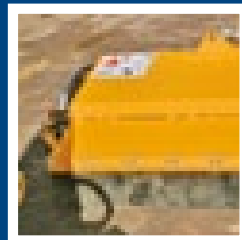
Head Position



# Heads

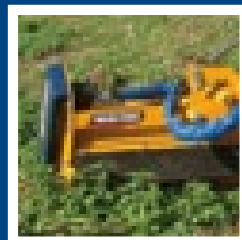
Flail head fitment is dependent on the model purchased, with a choice available on most. The range starts with 950mm cutting width and rises to a full 2m.

Most heads offer a choice of 7 flails and the ability to adjust the rotor speed to suit verge or hedge.



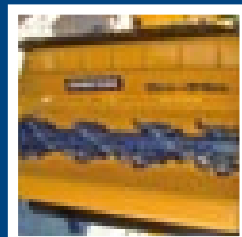
## 950 / 1257 LW

The 950 and 1257 LW heads are lighter weight for smaller machines. Direct driven from an end drive motor reducing the overall weight as there is no need for belts and pulleys.



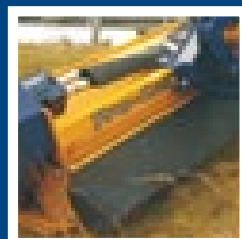
## 1107 MW

The 1107 MW heads are of medium weight but with all the advantages that belt drive gives, close-in cutting and damage limitation from unseen obstacles.



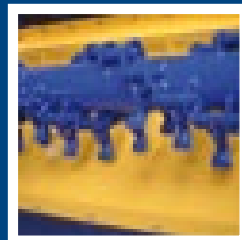
## Pro-Trim

The Pro-Trim range offers double helix shaft technology delivering up to 45% overlap of the flails, belt driven protection against unseen debris and close-in cutting and interchangeable shaft options allowing speedy flail change times on any of the 7 flail types. Pro-Trim is also available in ISMP.



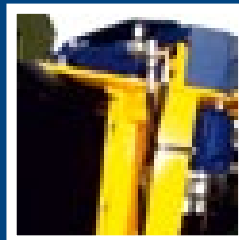
## Pro-Cut

The Pro-Cut range is heavier duty, made of Domex Steel and offers double helix shaft technology delivering up to 45% overlap of the flails, belt driven protection against unseen debris and close-in cutting and interchangeable shaft operations allowing speedy flail change times. Pro-Cut is also available in ISMP.



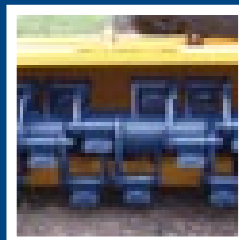
## Double helix shaft

The Pro-Trim range offers double helix shaft technology (a Bomford innovation) delivering up to 45% overlap of the flails, belt driven protection against unseen debris and close-in cutting.



## Hydraulic roller

Now available on Pro-Trim and Pro-Cut heads. This enables the operator to raise the roller to a higher position, remotely from inside the cab when cutting hedge.



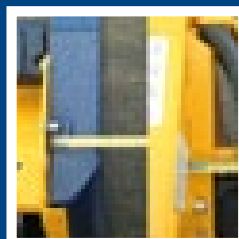
## ISMP

The ISMP head enables the whole shaft assembly to be changed saving considerable down time when different flails are required for different jobs. Pro-Trim, Pro-Cut and ISMP heads are equipped with 'Anti Wrap' bearings to reduce the risk of debris fouling the all important rotor bearings..



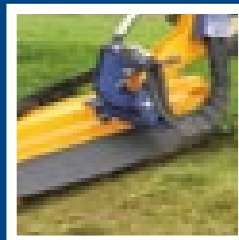
## Variable Track Brackets

The new VTB has been designed for operators who need to work in restrictive areas such as narrow lanes - perfect for getting up close and personal to hedges on rural roads and country estates.



## Belt drive - verses - direct drive

The belt housing on belt driven heads is typically 75mm narrower than the end drive motors enabling the head to get closer in to the hedge or fence. Belt drives offer shock protection when the rotor hits an obstacle where direct shaft driven end drive can sheer, resulting in expensive repairs and prolonged down time.



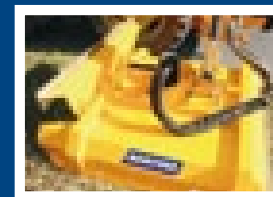
## 2 Metre HD Head

The 2m head offer the widest cutting width on the market, heavy duty build and a range of flail choices.

# Attachments

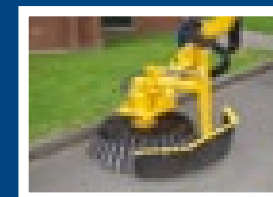
A wide selection of attachment for our arm mowers is available to improve the versatility and therefore the profitability of the Bomford range.

Bomford attachments are built with the same attention to detail and robust qualities that you have come to expect from the Bomford machinery range.



## Rotary Heads

Bomford's Rotary Heads are ideal for longer growth material. Available with blades or heavy-duty chain cutting options, operating in either vertical or horizontal plane, its 2.25msq cutting area makes short work of even the most challenging tasks



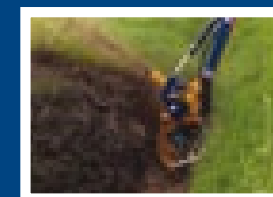
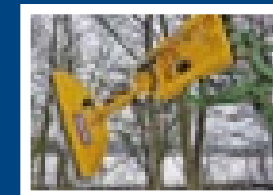
## Weed Brush

Bomford's Radial weed brush removes wild herbs and weeds on open cycling paths, pavements and road verges. The debris is moved to the side as the head travels forward.



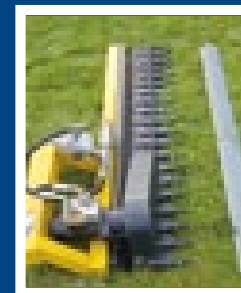
## Pro-Saw

The new ProSaw is suitable for use with all sizes of Bomford reach arm mower, from the Kestrel upwards. An alternative model is available, that includes a frame – the HRF (Hydraulic Reach Frame) - that enables the ProSaw to be mounted onto a telescopic handler or tractor loader. With widths of 1.6m, 2.0m and 2.4m, the Pro-Saw comprises four circular saw blades capable of cutting through branches of up to 20cm (8").



## Ditch Cleaner

The Bomford Ditch Cleaner is designed for use with a range of side-arm mowers, simplifying the maintenance of roadside ditches and grips. Two models are available, manual/hydraulic, flap and slew in standard and high speed comprising a 600mm diameter rotary cutting head, powered by a multi-stroking radial piston motor.



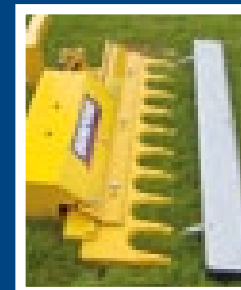
## Standard Duty Sheartrim

- hydraulic motor drive and Pitman wheel to 'sectional' reciprocating cutter bar
- standard 70mm sq clamp mount
- hydraulic flow divider and overloader protection
- maximum flow 60 litres per minute
- minimum flow 30 litres per minute
- maximum cutting ability 20mm diameter
- length available 1500mm



## Medium Duty Sheartrim

- hydraulic ram and shuttle valve to solid tool steel cutter bar
- standard Bomford 70mm clamp mount
- overload / reversing valve protection
- maximum cutting ability 50mm diameter
- hydraulic requirement 34 – 45 litres per minute at 240 bar maximum
- lengths available 1600mm and 2000mm



## Heavy Duty Sheartrim

- hydraulic ram and shuttle valve to solid steel cutter bar
- standard Bomford 70mm clamp mount
- overload reversing valve protection
- maximum cutting ability 100mm diameter
- hydraulic requirement 40 – 45 litres per minute at 240 bar maximum
- lengths available 1350mm and 2200mm



## Debris Blower

Controlled from within the cab and Driven by its own hydraulic motor, the fully adjustable Bomford Debris Blower effortlessly removes hedge and verge trimmings from the roadside.

## Heads System compatibility

| 950LW                 | 1107MW                | 1257LW                | Pro-Trim 1.2          | Pro-Trim 1.5      | Pro-Trim ISMP 1.2 | Pro-Cut 1.2          | Pro-Cut 1.5          | HD 2.0m              | Pro-Saw<br>(Except Forward Arm) | Rotary Head<br>(Except Forward Arm)        | Ditcher<br>(Except Forward Arm) |
|-----------------------|-----------------------|-----------------------|-----------------------|-------------------|-------------------|----------------------|----------------------|----------------------|---------------------------------|--|---------------------------------|
| Robin (50 Litres)     | Robin (50 Litres)     | Robin (50 Litres)     | Kestrel E (74 Litres) | Hawk (104 Litres) | Hawk (104 Litres) | Falcon (125 Litres)  | Falcon (125 Litres)  | Buzzard (125 Litres) | Kestrel/Hawk (88/104 Litres)    | Falcon (125 Litres)                        | Falcon (125 Litres)             |
| Kite (74 Litres)      | Kite (74 Litres)      | Kite (74 Litres)      | Kestrel S (88 Litres) | -                 | -                 | Buzzard (125 Litres) | Buzzard (125 Litres) | -                    | Falcon (125 Litres)             | Buzzard (125 Litres)                       | Buzzard (125 Litres)            |
| Kestrel E (74 Litres) | Kestrel E (74 Litres) | Kestrel E (74 Litres) | Hawk (104 Litres)     | -                 | -                 | Heron (120 Litres)   | Heron (120 Litres)   | -                    | Buzzard (125 Litres)            | Heron (120 Litres)                         | Heron (120 Litres)              |
| -                     | -                     | -                     | -                     | -                 | -                 | Eagle (137 Litres)   | Eagle (137 Litres)   | -                    | Heron (120 Litres)              | Eagle (137 Litres)                         | Eagle (137 Litres)              |
| 130 kg                | 160 kg                | 145 > 170 kg          | 240 > 260 kg          | 320 > 330 kg      | 300 > 340 kg      | 280>300              | 350 > 370 kg         | -                    | Eagle (137 Litres)              | NB* All weights dependent on Flail choice. |                                 |

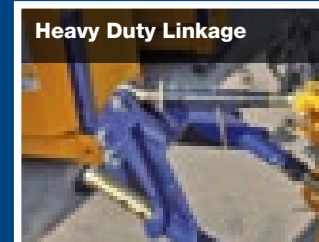


Over the decades we have designed, adapted and invented a range of flails for our cutting heads to suit every purpose, the vast majority of our heads now offer the ability to fit any one of seven flail designs.

All Bomford hedge cutters attach to the tractor using 1 or 2 styles of mounting systems.

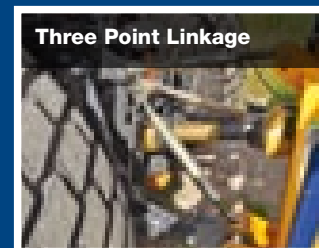
## System 1

Three point linkage kits that allow quick and easy attachment to the tractor using the standard three point mounting and machine support frame. There are 3 types of three point mounting kits.



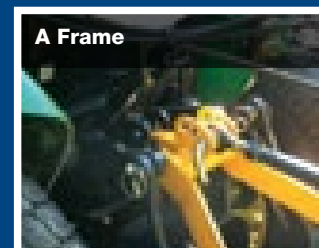
Heavy duty three point linkages provide maximum stability for larger arm mowers such as the Hawk 6.5T and the Falcon range when three point mounted.

This linkage is suitable for Cat II and Cat III, three point linkages and for machines up to 6.5m reach. This heavy-duty linkage can also be used in conjunction with a tractor's Euro type hitch.



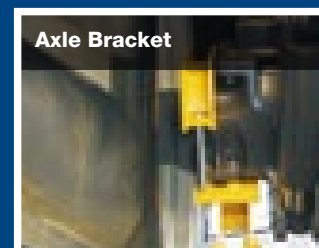
This type of mounting frame is fitted to the machine before fitting to the tractor. The tractor's 3 point linkage is then attached to the machine and the mounting frame. The machine is then lifted to its working height and the telescopic support rods locked via pins to hold the machine at the correct height.

The machine is levelled using the top link and the lift arms lowered so that the machine is carried on the frame and not supported by the tractor's hydraulic lift arms. The check chains are tightened to prevent sideways movement.



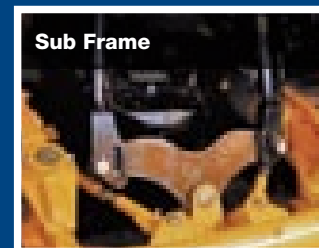
This type of mounting frame is fixed and fitted to the tractor's top link clevis, the top link is then fitted between the frame and the machine, the lift arms fitted to the lower pins of the machine and the machine lifted to working height.

With the machine at the correct height the frame can be bolted to the machine using one of the series of attachment holes. The machine is levelled using the top link and the lift arms lowered so that the machine is carried on the frame and not supported by the tractor's hydraulic lift arms. The check chains are tightened to prevent sideways movement.



Axle brackets are incorporated, where necessary, with stabiliser and cab suspension mounting positions. The mounting forks of the machine then attach to the axle brackets and are locked on using removable chocks that clamp around the axle bracket mounting pin.

The machine is held in position at its working height by means of a mounting yoke that is fitted to the tractor's drop arms and the centre lower part of the machine's mainframe. The tractor's drop arms are lowered to their lowest position and the machine is levelled by the screw adjustment of the tractor's drop arms.



On Hawk and Falcon machines, the sub-frame and axle brackets may be specified as an alternative to the three point mounting system.

## System 2

Axle brackets allow rigid mounting of the machine to the tractor with no sway or movement between tractor and machine.

The axle brackets are attached to the underside of the tractor's rear axle:

### System compatibility

| "A" Frame  | Telescopic 3 point linkage | Heavy Duty Linkage | Axle Bracket | Sub Frame |
|------------|----------------------------|--------------------|--------------|-----------|
| MicroKlipa | Kite                       | Hawk 6.5T          | Hawk         | Buzzard   |
| Robin      | Kestrel                    | Falcon             | Falcon       | Heron     |
| -          | Hawk                       | -                  | Buzzard      | Eagle     |
| -          | Heron                      | -                  | Eagle        | Hawk      |

### 'T' Flail - 40mm

Designed for fine finish hedge trimming, the 40mm 'T' Flail has the ability to cut material up to 50mm (2") thick for added versatility.

### HS60 - 60mm Bootee Flail

Dual purpose hedge and vegetation flail. Drop forged, will cut up to 35mm (1½"). Interchangeable with the 'T' Flail 60mm.

### 'T' Flail - 60mm

The 'Professionals' choice. Gives an excellent finish on hedges from six months growth to 50mm (2") thick. Interchangeable with the HS60 Bootee Flail.

### Pro Flail - 40mm

For annual hedge trimming and vegetation control.

### BB Flail - 40mm

Reversible shackle mounted back to back flail. the narrow profiles and sharp cutting edges give a clean cut with low power consumption.

### Bushmaster Flail

The Bushmaster flail is very heavy duty and able to cut growth of up to 100mm (4") – perfect for three year hedge growth or brush cutting.

### MP44 - 44mm multi-purpose Bootee Flail

Dual purpose hedge and vegetation flail. Drop forged and will cut material up to 35mm (1½").

### True-Cut Flail

A longer body producing a faster tip speed. A more pronounced leading edge on the shaft removes unwanted build up of material and allows the flail to retain better cutting characteristics delivering 'cutting hedge perfection'.

● Standard ● Optional ● Not Available

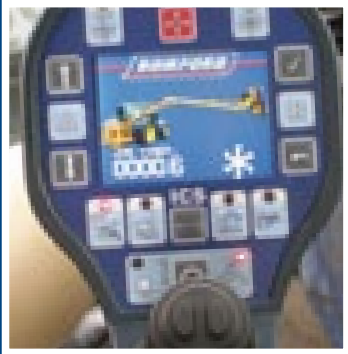
| Cutting Heads permitted                      |        | MP44 | HS40 | T60 | T40 | True Cut | Pro Flails | BB | Bushmaster | No. Flails |
|--|--------|------|------|-----|-----|----------|------------|----|------------|------------|
| 1257mm LW with 102mm roller                  | Flails | ●    | ●    | ●   | ●   | ●        | ●          | ●  | ●          | 36         |
| 1257mm LW with 150mm roller                  | Flails | ●    | ●    | ●   | ●   | ●        | ●          | ●  | ●          | 36         |
| 1107mm MW with twin back to back, 115 roller | Flails | ●    | ●    | ●   | ●   | ●        | ●          | ●  | ●          | 32         |
| 1.2m Pro-Trim with 115mm roller              | Flails | ●    | ●    | ●   | ●   | ●        | ●          | ●  | ●          | 32         |
| 1.2m Pro-Trim with 150mm roller              | Flails | ●    | ●    | ●   | ●   | ●        | ●          | ●  | ●          | 32         |
| 1.2m head ISMP with 115mm roller             | Flails | ●    | ●    | ●   | ●   | ●        | ●          | ●  | ●          | 24         |
| 1.2m head ISMP with 150mm roller             | Flails | ●    | ●    | ●   | ●   | ●        | ●          | ●  | ●          | 24         |
| 1.5m Pro-Trim with 115mm roller              | Flails | ●    | ●    | ●   | ●   | ●        | ●          | ●  | ●          | 40         |
| 1.5m Pro-Trim with 150mm roller              | Flails | ●    | ●    | ●   | ●   | ●        | ●          | ●  | ●          | 40         |
| 2m HD head                                   | Flails | ●    | ●    | ●   | ●   | ●        | ●          | ●  | ●          | 54         |

Controls

Every machine in the Bomford range has tailor-made control systems, with a choice of system's available on most arm mowers. Bomford are continually improving the features available, especially in the electronic fully proportional controls.

CTVM

Developed to meet the demands of local authorities for parks and municipal areas. The CTVM has a variable cutting height from 8mm to 130mm, a mountable kerb height of 355mm, sealed bearings and pressed scoop flails.



The new ICS 4 is supplied as standard on the new Eagle range, with a new larger TFT screen and vibrant colours for a clearer on screen display.

The ICS 4 will allow the introduction of more finely controlled features in the near future.



Due to the low pressure control the subsequent low force required to move the joystick means a reduction in operator fatigue and consequently higher potential output. Head angle, slew and telescopic functions are also controlled from the purpose built ergonomically designed joystick grip.



Fully proportional fingertip control for the first and second arm, as well as head angling, slew and telescopic arm functions. LCD display for hours worked, faults, error and warning messages.

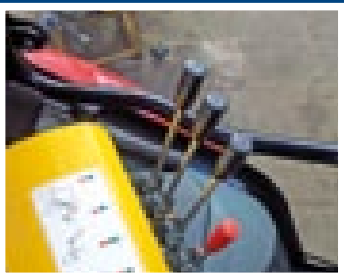
Allows operator to select individual ram speeds for each operation and has timers, fault diagnosis and variable settings.



Fully proportional control of the first and second arms, switch functionality for all other functions.



Proportional control of the first and second arms, with joystick functionality for all other services.



Lever arm controls provide basic operation of first and second arm, along with head angling, and all other available functions depending on specification.



The new Bomford CTVM has twin V belt drive and interchangeable mounting arms to accommodate a large range of prime movers.

- Features:**
- 1.3m and 1.6m cutting widths
  - Shaft driven
  - 115 mm roller

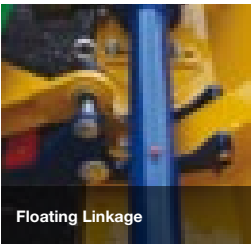
|                       | CTVM 1.3m  | CTVM 1.6m  |
|-----------------------|--|--|
| Cutting width         | 1300mm   | 1600mm   |
| Overall width         | 1500mm   | 1797mm   |
| Max cutting height    | 130mm  | 130mm  |
| Min cutting height    | 8mm  | 8mm  |
| Weight                | 215kg (cw NH-MC35 mounting brackets)                                       | 295kg (cw NH-MC35 mounting brackets)                                     |
| Mountable kerb height | (with NH MC35) 14 inches   | (with NH MC35) 14 inches   |
| Front wheels          | 300mm diameter 105mm width   | 300mm diameter 105mm width   |
| Rear roller           | 115mm diameter   | 115mm diameter   |
| Rotor shaft           | 102mm diameter   | 102mm diameter   |
| Bearing               | 40mm sealed bearings   | 40mm sealed bearings   |
| Flails                | 24 scoop type / 41 metres per second tip speed                             | 32 scoop type / 41 metres per second tip speed                           |
| Gearbox and tube      | EP90 filled gearbox and drive tube /Quad bearings                          | EP90 filled gearbox and drive tube /Quad bearings                        |
| PTP                   | Max 2250 rpm PTO input speed (different input speeds can be catered for)   | Max 2250 rpm PTO input speed (different input speeds can be catered for) |
| Cowl                  | 4mm Domex Sheet, 5mm rear rubber guarding, heavy duty arms and Cat II pins | Domex Sheet, 5mm rear rubber guarding, heavy duty arms and Cat II pins   |
| Drive                 | Twin vee-belts on cast pulleys, tensioned through gearbox mountings        | Twin vee-belts on cast pulleys, tensioned through gearbox mountings      |

System compatibility

| Intelligent Control System (ICS) | Electronic Proportional (EPP/III/EPC) | Low Pressure Hydraulics (LPH) | Low Friction Cable Controls (CC) |
|----------------------------------|---------------------------------------|-------------------------------|----------------------------------|
| Hawk                             | Microklippa                           | Kite                          | MicroKlippa                      |
| Falcon                           | Robin                                 | Kestrel E                     | Robin                            |
| Buzzard                          | Kestrel S                             | Kestrel S                     | Kite                             |
| Heron                            | Hawk                                  | -                             | Kestrel E                        |
| B68-68                           | Falcon                                | -                             | Kestrel S                        |
| B81-81                           | Buzzard                               | -                             | -                                |
| -                                | Heron                                 | -                             | -                                |
| -                                | B68-68 & B81-81                       | -                             | -                                |
| -                                | B49FM, B54FM & B58FM                  | -                             | -                                |



Adjustable Verge Height



Floating Linkage



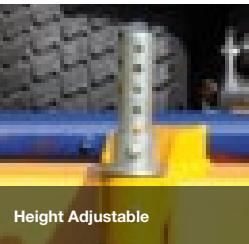
Front Mount



Shaft Drive



300mm Wheels



Height Adjustable

Bandit

The Bandit trailed flail mower is aimed at professional users where efficiency and finish are a must. The Bomford Bandit mower range is built to withstand the toughest working conditions, remaining manoeuvrable when mowing tight up to walls and obstructions. The flexible design of the Bandit allows it to be front or rear mounted simply by turning the “A” frame around.

Turbo Mower  
Elite/Euro/Open

The Turbo Mower Elite, Euro and Open range offers operator's a huge choice of cutting widths at very cost effective prices.



Features:

- 1.5m or 1.8m or 2.25m cutting widths
- Fitted with roller as standard
- Variable cutting height
- Cat II three point linkage
- 540 or 1000 rpm PTO speeds
- Front or rear mount option

|                             | B1500         | B1800              | B2250         |
|-----------------------------|---------------|--------------------|---------------|
| Cutting width               | 1.5m (4'11")  | 1.8m (6')          | 2.25m (7'2")  |
| Transport width             | 1.74m (5'8")  | 2.05m (6'9")       | 2.50m (8'2")  |
| Cutting height              | 13 - 105mm    | 13 - 105mm         | 13 - 105mm    |
| No. of Flails               | 40            | 50                 | 62            |
| Flail type                  | Pro/Bootte/BB | Pro/Bootte/BB      | Pro/Bootte/BB |
| Fully offset left of centre | 700 mm        | 700 mm             | 700 mm        |
| Offset system               | Manual        | Optional hydraulic | Hydraulic     |
| Power requirement           | 30hp          | 50hp               | 90hp          |
| Rear roller size            | 115mm         | 150mm              | 150mm         |
| Weight                      | 470kg         | 580kg              | 650kg         |

Features:

- Turbo Mower 1.3m, 1.5m, 1.9m, 2.25m, 2.3m, 2.45m, 2.5m, 2.7m and 2.8m cutting widths
- Front mount options
- 1.3 and 1.5 manual offset
- Hydraulic offset standard on 1.9m and above
- Standard fitted roller and side skids
- Cat II three point linkage mounted
- Over run slip clutch protected

|                             | Elite 1300  | Elite 1500   | Elite 1900          | Elite 2250          | Elite 2450          | Elite 2700          | Open 2300           | Open 2500           | Open 2800           | Euro 250            | Euro 280            |
|-----------------------------|-------------|--------------|---------------------|---------------------|---------------------|---------------------|---------------------|---------------------|---------------------|---------------------|---------------------|
| Working width               | 1.3m (4'3") | 1.45m (4'9") | 1.9m (6'4")         | 2.26m (7'5")        | 2.42m (8')          | 2.72m (8'10")       | 2.28m (7'6")        | 2.44m (8')          | 2.77m (9'1")        | 2.5m (8'3")         | 2.8m (9'2")         |
| Weight                      | 185kg       | 205kg        | 410kg               | 462kg               | 495kg               | 525kg               | 525kg               | 525kg               | 525kg               | 785kg               | 850kg               |
| Hydraulic offset            | N/A         | N/A          | Hydraulic Operation | Hydraulic Operation | Hydraulic Operation | Hydraulic Operation | Hydraulic Operation | Hydraulic Operation | Hydraulic Operation | Hydraulic Operation | Hydraulic Operation |
| Fully offset left of centre | 69cm        | 75cm         | 150cm               | 110cm               | 172cm               | 201cm               | 201cm               | 201cm               | 201cm               | 400cm               | 400cm               |
| PTO speed                   | 540         | 540          | 540                 | 540                 | 540                 | 1000                | 1000                | 1000                | 1000                | 1000                | 1000                |
| Front mount                 | N/A         | N/A          | N/A                 | N/A                 | N/A                 | N/A                 | N/A                 | N/A                 | N/A                 | STD                 | STD                 |
| No. of flails (Whale Tail)  | 18          | 20           | 24                  | 28                  | 30                  | 34                  | 26                  | 28                  | 32                  | 28                  | 32                  |
| Power requirements          | 30hp        | 35hp         | 45hp                | 55hp                | 65hp                | 75hp                | 55hp                | 65hp                | 75hp                | 60hp                | 80hp                |
| Cutting height              | 32-111mm    | 32-111mm     | 32-111mm            | 32-111mm            | 32-111mm            | 32-111mm            | 32-111mm            | 32-111mm            | 32-111mm            | 43-88mm             | 43-88mm             |
| Roller size                 | 114mm       | 114mm        | 140mm               | 140mm               | 140mm               | 140mm               | 140mm               | 140mm               | 140mm               | 140mm               | 140mm               |



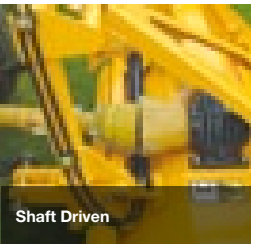
New Gearbox & Drive Tube



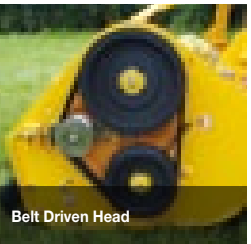
Side Shift



Roller



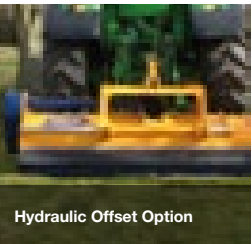
Shaft Driven



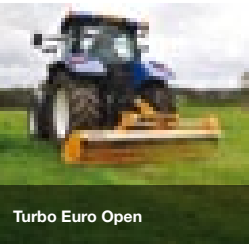
Belt Driven Head



Front Mount



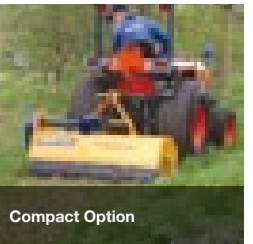
Hydraulic Offset Option



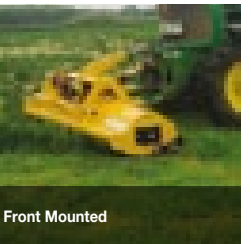
Turbo Euro Open



Whale Tail Flails



Compact Option



Front Mounted



Belt Driven



# Raptor

The New Raptor verge mower is the ideal choice for users who have a dedicated shoulder mowing operation to perform.

The Raptor can be front mounted allowing the fitment of a Bomford arm mower on the rear giving a 3.5m cut, in one pass. The Raptor can effortlessly work around street furniture and varying ground levels.

# Turbo VM

The Turbo VM is specifically designed for verge mowing over sustained periods.



**Features:**

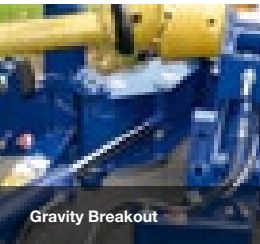
- Cutting widths of: 1.2, 1.6 or 2.0m.
- Front or Rear mounted options
- Banks cutting between 90 degrees up and 50 degrees down
- Cat II three point linkage
- Choice of flails

|                     | 1200         | 1600           | 2000         |
|---------------------|--------------|----------------|--------------|
| Reach               | 2.84m (9'4") | 3.24m (10' 7") | 3.64m (12")  |
| Cutting width       | 1.2m (4')    | 1.6m (5'3")    | 2.00m (6'6") |
| Max Offset          | 750mm (2'6") | 750mm (2'6")   | 750mm (2'6") |
| No. of Flails       | 32           | 44             | 54           |
| PTO Speed (rpm)     | 1000/540     | 1000/540       | 1000/540     |
| Cowl angle movement | +90° to -50° | +90° to -50°   | +90° to -50° |
| Power requirement   | 40hp         | 45hp           | 70hp         |
| Weight              | 640kg        | 670kg          | 840kg        |

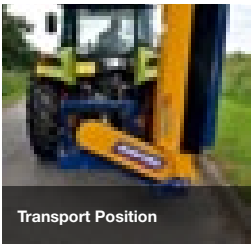
**Features:**

- 1.6m or 2.0m cutting widths
- Plus 90° to minus 50° cowl angling
- Direct drive through twin pivoting gearboxes
- 750mm offset
- Cat II three point linkage
- New front mount option available
- MP44 boot flails or twisted shackle flails

|                             | VM1600                                   | VM2000                                   |
|-----------------------------|--|--|
| Width                       | 1.6m (5'4")                              | 2.0m (6'7")                              |
| Fully offset left or centre | 750mm (2'5")                             | 750mm (2'5")                             |
| Direct Drive System         | Quad Power™ Drive Belts + 90° Gearbox x2 | Quad Power™ Drive Belts + 90° Gearbox x2 |
| PTO input rpm               | 1000                                     | 1000                                     |
| No. of Bootle Flails        | 44                                       | 54                                       |
| Tractor HP                  | 90hp                                     | 125hp                                    |
| Cowl Angle Movement         | 140° (+90° to -50°)                      | 140° (+90° to -50°)                      |
| Weight                      | 1180kg                                   | 1250kg                                   |
| Front Mountable             | Optional                                 | N/A                                      |



Gravity Breakout



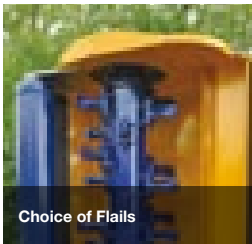
Transport Position



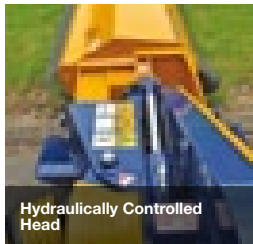
Variable Offset Position



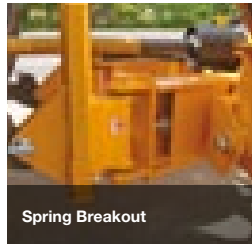
Up Bank Cutting



Choice of Flails



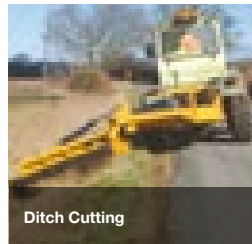
Hydraulically Controlled Head



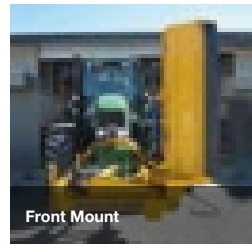
Spring Breakout



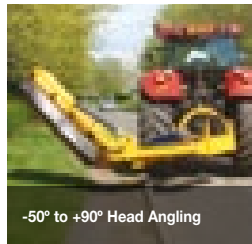
Shaft Driven



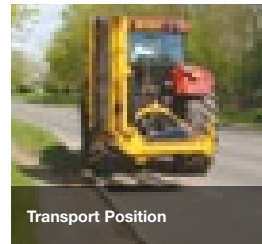
Ditch Cutting



Front Mount



-50° to +90° Head Angling



Transport Position



# Rotary Slasher

The Rotary Slasher range offers uncompromising topping through simple, robust technology.

# Twin-Blade

The new, more robust Twin-Blade is a flexible, efficient, in-line topper or fully offset - perfect for paddocks and headlands.



**Features:**

- 1.5m, 1.8m and 2.1m cutting widths
- Variable cutting height
- Puncture proof moulded tail wheel
- Rear flap
- Wear skids

|                           | RS15         | RS18         | RS21          |
|---------------------------|--------------|--------------|---------------|
| Cutting width             | 1.50m (4'9") | 1.80m (5'9") | 2.10m (6'9")  |
| Transport width           | 1.60m (5'2") | 1.93m (6'3") | 2.23m (7'3")  |
| Length                    | 2.46m (8')   | 2.69m (8'8") | 3.10m (10'2") |
| Weight                    | 300kg        | 370kg        | 470kg         |
| Cutting height            | 25 - 150mm   | 19 - 150mm   | 25 - 150mm    |
| Power requirements (min.) | 20hp         | 30hp         | 45hp          |
| Gearbox protection        | Slip clutch  | Slip clutch  | Slip clutch   |
| Rubber guards             | Rear         | Rear         | Rear          |
| Tail wheel                | Laminated    | Laminated    | Laminated     |

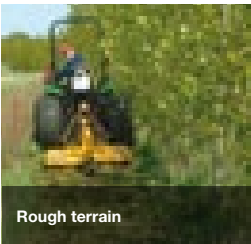
**Features:**

- Shaft driven
- 1.8m, 2.4m offset and 2.7m cutting width
- Variable cutting height
- Shearbolt and overrun gear box protection
- Cat 1 or Cat II three point linkage
- A-Frame mounting option

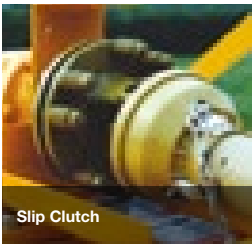
|                             | TB180       | TB270       | TB240 offset |
|-----------------------------|-------------|-------------|--------------|
| Cutting width               | 1800mm      | 2800mm      | 2400mm       |
| Overall width (transport)   | 1970mm      | 2971mm      | 1850mm       |
| Power requirement (PTO)     | 22kW (30hp) | 22kW (30hp) | 22kW (30hp)  |
| Linkage mounting            | Cat I & II  | Cat I       | Cat II       |
| Offset capability           | Yes         | No          | Yes          |
| Fully offset rightof centre | N/A         | N/A         | 4350 mm      |
| PTO speed                   | 540rpm      | 540rpm      | 540rpm       |
| Number of rotors            | 1           | 1           | 2            |
| Number of blade carriers    | 1           | 2           | 2            |
| Number of blades            | 2           | 4           | 4            |
| Number of skids             | 2           | 2           | 2            |
| Cutting Height              | 30-150mm    | 30 -150mm   | 30-150mm     |
| Weight                      | 290kg       | 430kg       | 550kg        |



Cast Iron Gearbox



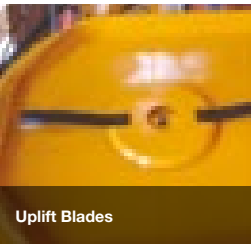
Rough terrain



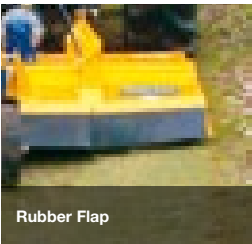
Slip Clutch



Puncture Proof Tyre



Uplift Blades



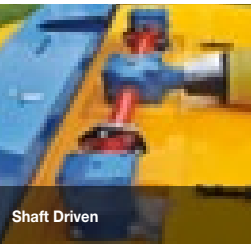
Rubber Flap



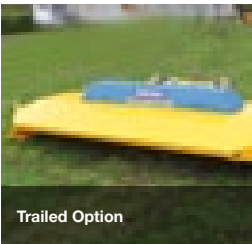
Timed Blades



Baffled Pan



Shaft Driven



Trailed Option

# Tri-Blade

The Tri-Blade topper is of robust design and has three sets of newly designed, heavy duty timed blades for stripe free cutting.

With an adjustable cutting height of between 25mm (1") and 225mm (9") the Bomford Tri-Blade offers superb versatility.

# Tri-Wing

The Tri-Wing flex mower, specifically designed for large open spaces, with wide-angle constant velocity drive shafts and in-line slip clutch protection. The clean lines of this robust design, reduces the build up cut debris from collecting and rotting the machine deck, maximising its working life.



Direct driven blades through 1000rpm independent gearboxes and rubber pto shaft couplings protects against debris impact. Slip clutch protection on the pto shaft ensures long life of the independent gearboxes.

**Features:**

- 2.75m cutting width
- 3.0m transport width
- Variable cutting height
- Three sets of timed blades
- Slip clutch protection
- Front and rear heavy duty chain guards
- Cat II three point linkage
- 1000 rpm gearbox driven



|                    | Tri-Blade 3000          | Tri-Blade 4000          |
|--------------------|-------------------------|-------------------------|
| Cutting width      | 2.75m (9')              | 4m (13'2")              |
| Transport width    | 3.0m (9'10")            | 1.8m (6')               |
| Length             | 3.54m (11'4")           | 4.54m (14' 10")         |
| Weight             | 980kg                   | 1325 kgs                |
| Cutting height     | 25mm - 225mm (1" - 10") | 25mm - 225mm (1" - 10") |
| PTO input          | 1000rpm                 | 1000rpm                 |
| Power requirements | 90hp                    | 120hp                   |

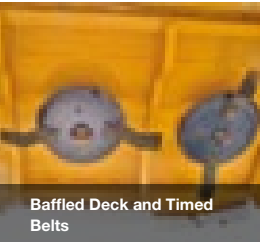
**Wheel Equipment**

Fitted with six 200/60 - 14.5 10 ply tyres as standard, the Tri-Wing 4.6 and 6m can also be also supplied with an eight wheel option for reduced ground pressure. The sprung shock absorbing mechanism ensures a smooth ride and reduces stress within the mainframe.

**Features:**

- 4.6m and 6m cutting widths
- Walking wheel kit option
- Nine heavy duty updraft blades
- Choice of 5 blade configurations
- Shredder option for maize
- Sprung suspension system
- 2.3m and 2.6m transport widths
- Hydraulic level lift system

|                     | TW4600            | TW6000            |
|---------------------|-------------------|-------------------|
| Cutting width       | 4.60m (15')       | 6.00m (20')       |
| Overall width       | 4.75m (15'7")     | 6.30m (20'8")     |
| Overall length      | 4.47m (14'8")     | 5.15m (16'11")    |
| Transport width     | 2.34m (7'8")      | 2.60m (8'6")      |
| Cutting height      | 25mm - 375mm      | 50mm - 325mm      |
| Horsepower (min)    | (1" - 15")        | (2" - 13")        |
| Blade overlap       | 80hp              | 100hp             |
| PTO speed           | 1000              | 1000              |
| Wing flex (degrees) | 90° up - 22° down | 90° up - 22° down |
| Weight (approx)     | 2420kg            | 3470kg            |



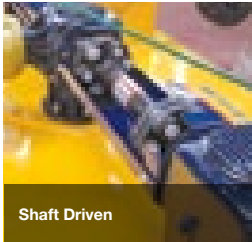
Baffled Deck and Timed Belts



Chain Guard



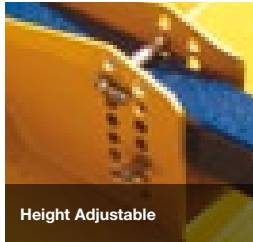
4m C/W End Tow Kit



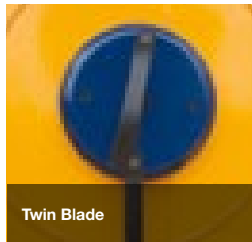
Shaft Driven



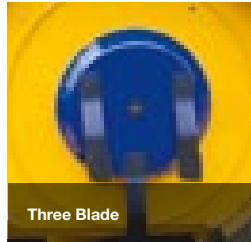
Drive Line Protection



Height Adjustable



Twin Blade



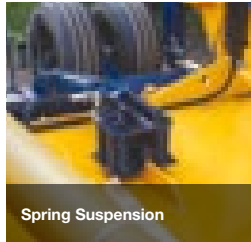
Three Blade



Three Blade Dome Pan



Dome Pan Shredder



Spring Suspension



Walking Wheels

# Roller Mower

The Bomford Roller Mower is designed for municipal use, sports fields and fine turfed areas.

# Pro-Sweep

The Pro-Sweep has a working width of 1.2m and features a hard wearing polypropylene brush powered by an hydraulic motor producing 205 bar.

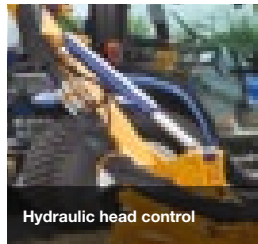
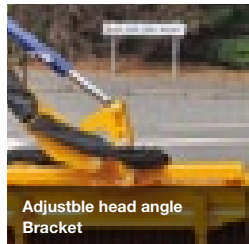
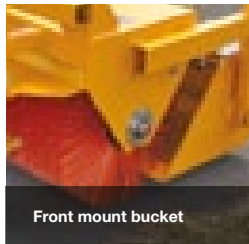
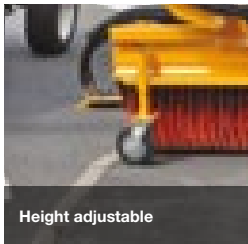
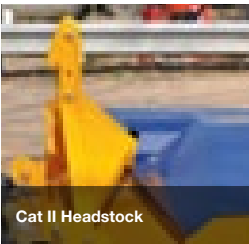
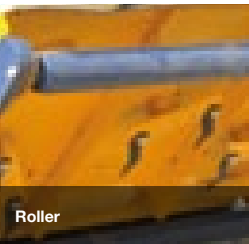
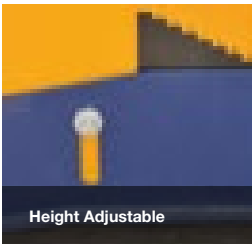


- Features:**
- 1.8m or 2.4m cutting widths
  - Front and rear height adjustable, anti scalping rollers
  - Cat II three point linkage mounted
  - Front and rear rubber flaps
  - Overlapping blades
  - Suitable for compact tractors over 35hp

|                          | 1800            | 2400            |
|--------------------------|-----------------|-----------------|
| Cutting width            | 1.8m (6')       | 2.4m (8')       |
| Minimum cutting height   | 12mm (0.5")     | 12mm (0.5")     |
| Maximum cutting height   | 90mm (4")       | 90mm (4")       |
| PTO speed                | 540rpm          | 540rpm          |
| Maximum cutting diameter | 25mm (1")       | 25mm (1")       |
| Blade tip speed          | 5.160m/min      | 5.160m/min      |
| Overall width            | 2.02m           | 2.62m           |
| Overall length           | 1.48m           | 1.48m           |
| Weight of machine        | 540kg (1188lbs) | 646kg (1421lbs) |
| Power requirement        | 45hp            | 50hp            |

- Features:**
- 1.2m sweeping heads
  - 75 L/min 205 bar drive system
  - Variable cutting height
  - 1.2m collection box
  - Polypropylene HD replaceable brushes
  - Rear facing adjustable collection box

|                | Pro-Sweep 1.2 |
|----------------|---------------|
| Sweep width    | 1.2m          |
| Power drive    | 205bar        |
| Hydraulic pump | 75L/min       |
| Weight         | 190kg         |





The new Buccaneer range - available in working widths of 1.30m to 2.50m - is designed to quickly and efficiently reduce standing or cut vegetation and stumps, of up to 300mm (12") thick, into fine shreds in a single pass.

To achieve this, the Buccaneer can be specified with either hard faced swinging hammers mounted onto a heavy duty 40mm diameter shaft, or alternatively for really heavy duty work, fixed hammers fitted with replaceable tungsten carbide teeth that are able to incorporate the mulched material into the soil.

**Features:**

- Choice of 7 cutting width options - 1.3m to 2.5m
- Replaceable skids
- Fixed or swinging flail options
- Six belt driven (12 on HDX model)
- Hydraulically adjustable throughput flap
- 40hp - 180hp tractor requirement options
- Rear pushbar standard on all 2.25m models
- 540rpm or 1,000rpm



|                     | Buccaneer SD 130   | Buccaneer SD 150   | Buccaneer SD 180   | Buccaneer SD 200   | Buccaneer SD 225  |
|---------------------|--------------------|--------------------|--------------------|--------------------|-------------------|
| Width of Cut        | 1300mm             | 1500mm             | 1800mm             | 2000mm             | 2250mm            |
| Overall Width       | 1500mm             | 1750mm             | 2000mm             | 2250mm             | 2500mm            |
| Number of Hammers   | 20                 | 24                 | 28                 | 32                 | 36                |
| PTO Speed           | 540                | 540                | 540                | 540                | 540               |
| Hammer Type         | Swing              | Swing              | Swing              | Swing              | Swing             |
| Weight              | 658kg              | 788kg              | 952kg              | 1116kg             | 1280kg            |
| Tractor HP          | 40hp               | 50hp               | 65hp               | 75hp               | 90hp              |
| Additional features | RR Pushbar         | RR Pushbar         | RR Pushbar         | RR Pushbar         | RR Pushbar        |
|                     | Buccaneer SDF 130  | Buccaneer SDF 150  | Buccaneer SDF 180  | Buccaneer SDF 200  | Buccaneer SDF 225 |
| Width of Cut        | 1300mm             | 1500mm             | 1800mm             | 2000mm             | 2250mm            |
| Overall Width       | 1500mm             | 1750mm             | 2000mm             | 2250mm             | 2500mm            |
| Number of Hammers   | 22                 | 26                 | 30                 | 34                 | 36                |
| PTO Speed           | 540                | 540                | 540                | 540                | 540               |
| Hammer Type         | Fixed              | Fixed              | Fixed              | Fixed              | Fixed             |
| Weight              | 665kg              | 815kg              | 977kg              | 1148kg             | 1305kg            |
| Tractor HP          | 40hp               | 50hp               | 65hp               | 75hp               | 90hp              |
| Additional features | RR Pushbar         | RR Pushbar         | RR Pushbar         | RR Pushbar         | RR Pushbar        |
|                     | Buccaneer HD 140   | Buccaneer HD 160   | Buccaneer HD 180   | Buccaneer HD 200   | Buccaneer HD 225  |
| Width of Cut        | 1400mm             | 1600mm             | 1800mm             | 2000mm             | 2250mm            |
| Overall Width       | 1700mm             | 1900mm             | 2100mm             | 2300mm             | 2550mm            |
| Number of Hammers   | 12                 | 16                 | 16                 | 20                 | 20                |
| PTO Speed           | 1000               | 1000               | 1000               | 1000               | 1000              |
| Hammer Type         | Swing              | Swing              | Swing              | Swing              | Swing             |
| Weight              | 1372kg             | 1498kg             | 1644kg             | 1770kg             | 1890kg            |
| Tractor HP          | 60-150hp           | 80-150hp           | 90-150hp           | 90-150hp           | 120-150hp         |
| Additional features | RR Pushbar         | RR Pushbar         | RR Pushbar         | RR Pushbar         | RR Pushbar        |
|                     | Buccaneer HDF 140  | Buccaneer HDF 160  | Buccaneer HDF 180  | Buccaneer HDF 200  | Buccaneer HDF 225 |
| Width of Cut        | 1400mm             | 1600mm             | 1800mm             | 2000mm             | 2250mm            |
| Overall Width       | 1700mm             | 1900mm             | 2100mm             | 2300mm             | 2550mm            |
| Number of Hammers   | 22                 | 26                 | 30                 | 34                 | 36                |
| PTO Speed           | 1000               | 1000               | 1000               | 1000               | 1000              |
| Hammer Type         | Fixed              | Fixed              | Fixed              | Fixed              | Fixed             |
| Weight              | 1262kg             | 1386kg             | 1510kg             | 1634kg             | 1775kg            |
| Tractor HP          | 70-150hp           | 80-150hp           | 90-150hp           | 100-150hp          | 120-150hp         |
| Additional features | RR Pushbar         | RR Pushbar         | RR Pushbar         | RR Pushbar         | RR Pushbar        |
|                     | Buccaneer HDX 180  | Buccaneer HDX 200  | Buccaneer HDX 225  | Buccaneer HDX 250  |                   |
| Width of Cut        | 1800mm             | 2000mm             | 2250mm             | 2500mm             |                   |
| Overall Width       | 2210mm             | 2410mm             | 2660mm             | 2720mm             |                   |
| Number of Hammers   | 16                 | 20                 | 20                 | 24                 |                   |
| PTO Speed           | 1000               | 1000               | 1000               | 1000               |                   |
| Hammer Type         | Swing              | Swing              | Swing              | Swing              |                   |
| Weight              | 1690kg             | 1815kg             | 1935kg             | 2095kg             |                   |
| Tractor HP          | 60-150hp           | 80-150hp           | 90-150hp           | 90-150hp           |                   |
| Additional features | RR Pushbar         | RR Pushbar         | RR Pushbar         | RR Pushbar         |                   |
|                     | Buccaneer HDXF 180 | Buccaneer HDXF 200 | Buccaneer HDXF 225 | Buccaneer HDXF 250 |                   |
| Width of Cut        | 1800mm             | 2000mm             | 2250mm             | 2500mm             |                   |
| Overall Width       | 2210mm             | 2410mm             | 2660mm             | 2720mm             |                   |
| Number of Hammers   | 30                 | 34                 | 36                 | 40                 |                   |
| PTO Speed           | 1000               | 1000               | 1000               | 1000               |                   |
| Hammer Type         | Fixed              | Fixed              | Fixed              | Fixed              |                   |
| Weight              | 1556kg             | 1681kg             | 1805kg             | 1962kg             |                   |
| Tractor HP          | 90-150hp           | 100-150hp          | 120-150hp          | 130-150hp          |                   |
| Additional features | RR Pushbar         | RR Pushbar         | RR Pushbar         | RR Pushbar         |                   |



Mulching



Hydraulic Rear Flap



HDX Dual Drive



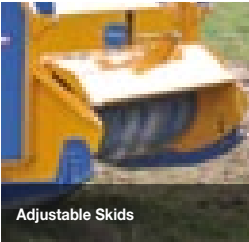
HD Swinging Flails



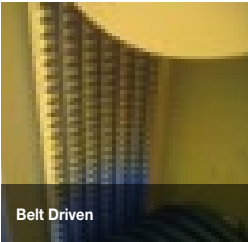
Push Bar



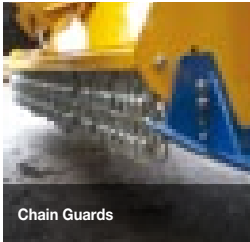
Fixed Hammer Flail



Adjustable Skids



Belt Driven



Chain Guards



Hammer Flails



Standard Duty



Gorse Cutting



Buccaneer  
Excavator

Suitable for use with excavators from 7 to 30 tonne. Working with oil pressure ranges of 200 to 260psi and oil flows between 80 up to 205 L/min, add to this weight options from 565kg right up to 1,475kg and there is a suitable model for almost all excavators.

Dyna-Drive

Designed in conjunction with the NIAE the Dyna-Drive will enable successive cereal crops to be sown at reduced costs in faster times than with traditional methods of cultivation.



**SDH** forest mulcher with swinging hammers & 360 degree movement for excavators from 7 to 16 tonnes, suited to mulch brush up to 200mm diameter.

|                | Working Width | Transport Width | Number of Hammers | Weight | Oil Flow L/min | Oil Pressure |
|----------------|---------------|-----------------|-------------------|--------|----------------|--------------|
| <b>SDH 130</b> | 1300mm        | 1500mm          | 20                | 643kg  | 80-120         | 200-260      |
| <b>SDH 150</b> | 1500mm        | 1500mm          | 20                | 768kg  | 80-120         | 200-260      |
| <b>SDH 180</b> | 1800mm        | 2000mm          | 20                | 932kg  | 80-120         | 200-260      |

**SDFH** forest mulcher with fixed hammers with tungsten carbide teeth for excavators from 7 to 16 tonnes, suited to mulch brush up to 200mm diameter.

|                 | Working Width | Transport Width | Number of Hammers | Weight | Oil Flow L/min | Oil Pressure |
|-----------------|---------------|-----------------|-------------------|--------|----------------|--------------|
| <b>SDFH 130</b> | 1300mm        | 1500mm          | 22                | 565kg  | 80-120         | 200-260      |
| <b>SDFH 150</b> | 1500mm        | 1750mm          | 26                | 670kg  | 80-120         | 200-260      |
| <b>SDFH 180</b> | 1800mm        | 2000mm          | 30                | 794kg  | 80-120         | 200-260      |

**HDH** forest mulcher with swinging hammers & 360 degree movement for excavators from 7 to 16 tonnes, suited to mulch brush up to 300mm diameter.

|                | Working Width | Transport Width | Number of Hammers | Weight | Oil Flow L/min | Oil Pressure |
|----------------|---------------|-----------------|-------------------|--------|----------------|--------------|
| <b>HDH 140</b> | 1400mm        | 1700mm          | 12                | 1337kg | 155            | 200-260      |
| <b>HDH 180</b> | 1800mm        | 2100mm          | 16                | 1609kg | 175            | 200-260      |
| <b>HDH 200</b> | 2000mm        | 2300mm          | 20                | 1735kg | 205            | 200-260      |

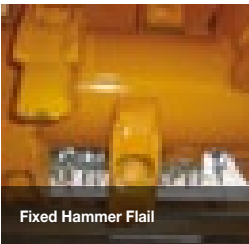
**HDFH** forest mulcher with fixed hammers with tungsten carbide teeth for excavators from 7 to 16 tonnes, suited to mulch brush up to 300mm diameter.

|                 | Working Width | Transport Width | Number of Hammers | Weight | Oil Flow L/min | Oil Pressure |
|-----------------|---------------|-----------------|-------------------|--------|----------------|--------------|
| <b>HDFH 140</b> | 1400mm        | 1700mm          | 22                | 1227kg | 155            | 200-260      |
| <b>HDFH 180</b> | 1800mm        | 1900mm          | 26                | 1350kg | 155            | 200-260      |
| <b>HDFH 200</b> | 2000mm        | 2100mm          | 30                | 1475kg | 155            | 200-260      |

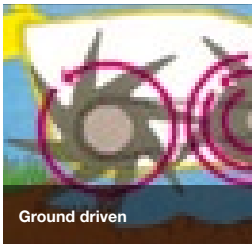
Features:

- 2.6, 3.0, 4.0 or 5.0m widths
- Maintenance free drive system
- Breaks up stubble, breaks down ploughing
- No PTO required
- Crumbler roller/packer option

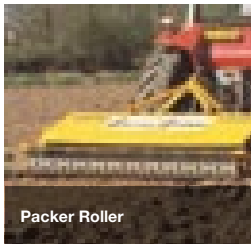
|                                   | Dyna-Drive 2600                  | Dyna-Drive 3000                  | Dyna-Drive 4000                  | Dyna-Drive 5000                  |
|-----------------------------------|----------------------------------|----------------------------------|----------------------------------|----------------------------------|
| Working width                     | 2.6m (8'6")                      | 3m (9'10")                       | 4m (13'1")                       | 5m (17'8")                       |
| Transport width                   | 3m (9'10")                       | 3.4m (11'2")                     | 4.4m (14'5")                     | 5.4m (17'8")                     |
| Tractor power requirement         | 80-120 hp                        | 90-130 hp                        | 130-180 hp                       | 160-240 hp                       |
| Output guide 7.5mph (12 kph)      | 3.13 ha/hr                       | 3.6 ha/hr                        | 4.8 ha/hr                        | 6 ha/hr                          |
| Weight including crumbler         | 1320 kg                          | 1480 kg                          | 2080 kg                          | 2620 kg                          |
| number of cleaning tines required | 160                              | 184                              | 244                              | 304                              |
| Options available                 | Crumbler roller<br>Packer roller | Crumbler roller<br>Packer roller | Crumbler roller<br>Packer roller | Crumbler roller<br>Packer roller |



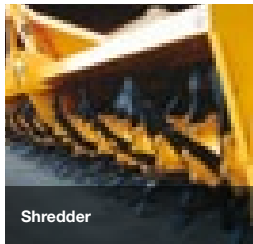
Fixed Hammer Flail



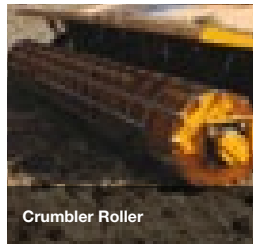
Ground driven



Packer Roller



Shredder



Crumbler Roller



HD chain drive



Tree point linkage mounted

The Bomford Sila-Bed distributes the material for bedding quickly and efficiently leaving a thick aerated bed of straw.

The Sila-Bed's reversible conveyor is driven from the hydraulic motor through a chain drive. The blade carrying rotor and paddle turbine is shaft driven by the twin speed gearbox. Straw is delivered into the rotor blades, cut and fed through the adjustable bale separators which pneumatically separates the strands before powerfully delivering the bedding materials to the required area.



The robust construction of the Bomford Sila-Bed ensures years of trouble free service whilst the pneumatic design produces maximum capillary action in the straw which results in excellent absorption and therefore longer bedding life.

Features:

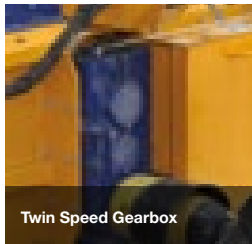
- Top chute or side chute models available
- Up to 168 blades can be fitted
- 300° chute handling or swivel chute
- Electronic proportional controls
- Road Lights option
- Rear bale post option

● Standard ● Optional ● Not Available

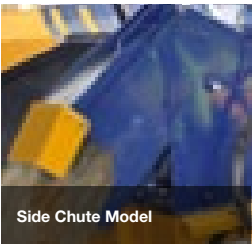
| Sila-Bed                | Top Swivel Chute Model  | Side Chute Model  |
|-------------------------|---|---|
| Minimum HP requirements | 45kw (60hp)   | 45kw (60hp)   |
| Unladen weight          | 2400 kg   | 2320 kg   |
| Overall length          | 4.10m (tail up) 5.46m (tail down)                                   | 4.10m (tail up) 5.5m (tail down)                                    |
| Overall width           | 2.15m   | 2.2m  |
| Overall height          | 2.8m (min) - 3.7m (max)   | 2.4m (min) - 2.5m (max)   |
| Body height             | 1.3m max.   | 1.3m max.   |
| Load space              | 3.5 cubic metres  | 3.5 cubic metres  |
| Bale capacity           | 2 x 1.5m diameter or 1 x 1.2m <sup>2</sup>                          | 2 x 1.5m diameter or 1 x 1.2m <sup>2</sup>                          |
| Number Bale restrictors | 7 Fixed   | 7 Fixed   |
| Controls                | Electronic proportional, 9 functions                                | Electronic proportional, 9 functions                                |
| Number conveyors slats  | 8   | 8   |
| HD chain gauge          | 25mm 16VI HD chain  | 25mm 16VI HD chain  |
| Max spreading range     | 18m (depending on material)   | 18m (depending on material)   |
| Gearbox                 | Twin speed independent  | Twin speed independent  |
| PTO                     | 540 (slip and over-run clutch protection/shear bolt on final drive) | 540 (slip and over-run clutch protection/shear bolt on final drive) |
| Conveyor drive          | Hydraulic motor through chain                                       | Hydraulic motor through chain                                       |
| Chute rotation          | 300°  | -   |
| Chute angling           | 72° to 127°   | 92°   |
| Tyres                   | 10.75 15.3 six stud fixing  | 10.75 15.3 six stud fixing  |



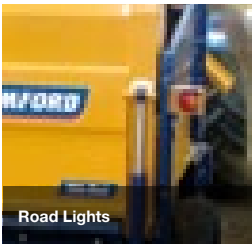
Wide Angle PTO



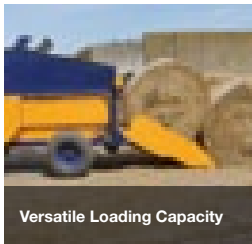
Twin Speed Gearbox



Side Chute Model



Road Lights



Versatile Loading Capacity



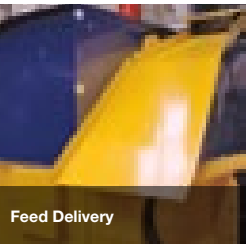
Bed Direction Indicator



Maximum Throughput



Fully Directional or Fixed Chute Options



Fingertip Control



**Bomford Turner Limited**  
Salford Priors, Evesham, Worcestershire WR11 8SW  
Tel: 01789 773383 Fax: 01789 773238  
Email: [info@bomford-turner.com](mailto:info@bomford-turner.com)  
**[www.bomford-turner.com](http://www.bomford-turner.com)**

follow us on:

